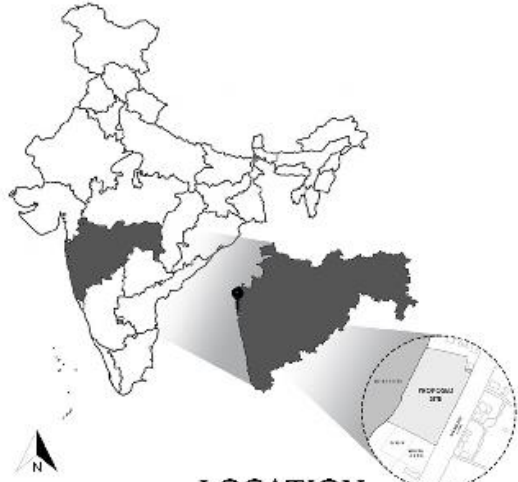




Searching For A New Balance Between Form And Functionality

AD semV
Shreyas Kulkarni A21
Guide- Anuj Gudekar

SITE ANALYSIS

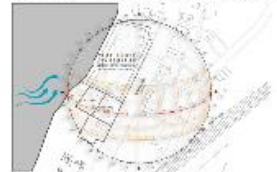


LOCATION

The site is accessible from one side with a 36m wide road (LRS Marg).
 There is a garden and a municipal school besides the plot.
 Presence of Kurla Railway Station within 1km radius.
 The Mithi River is situated on the opposite end of the road (floodline- 6m).



SUN PATH AND WIND



VEGETATION



SITE SURROUNDINGS PRESENTLY

EFFECTS OF THE MEETHI RIVER ON SITE



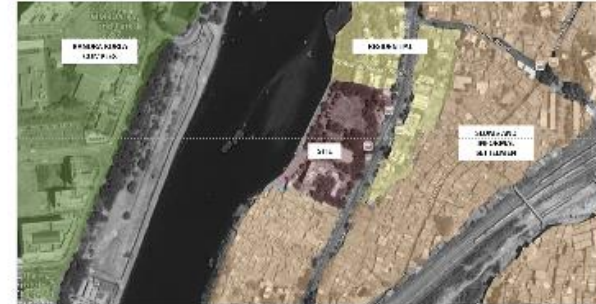
Pollution-

Reduced importance as a storm water drain as it has been used as a sewer. Poses as a hazard during high tide bringing polluted water into the city. Foul smell from the river can be hazardous and can cause people to displace.

Flooding-

Increase in catchment area has decreased mangrove cover. Reduced ground's ability to absorb rainwater increasing the risk of flooding. Since the site is only 3m above the water level, the river could pose a major threat.

LAND USE MAP AROUND THE SITE



SITE CONTEXT MAP



CONCEPT-

EXPERIENCE IN VOLUMES

A courthouse consists of multiple users using varying spaces.

Each of these spaces serves a **unique purpose** and hence the volume occupied by each space is defined by the attribute.

Volumes can create a **familiar or unfamiliar** space where the user is made aware of the change or continuation of a particular activity.

Transitional
Volumes

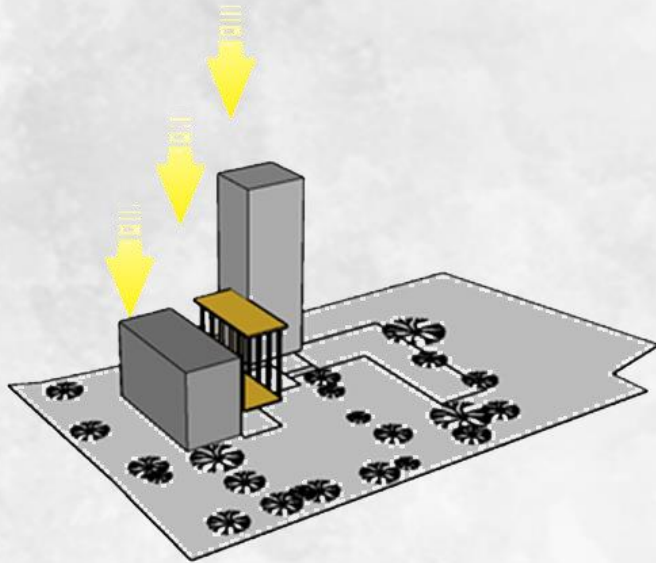


UN-familiar
volume

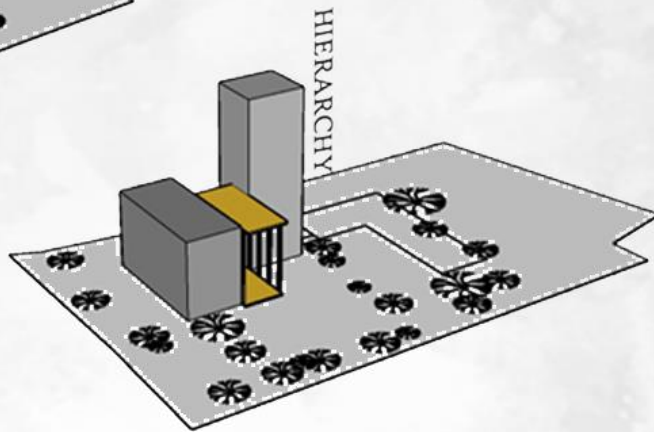
Familiar
volume

FORM DEVELOPMENT

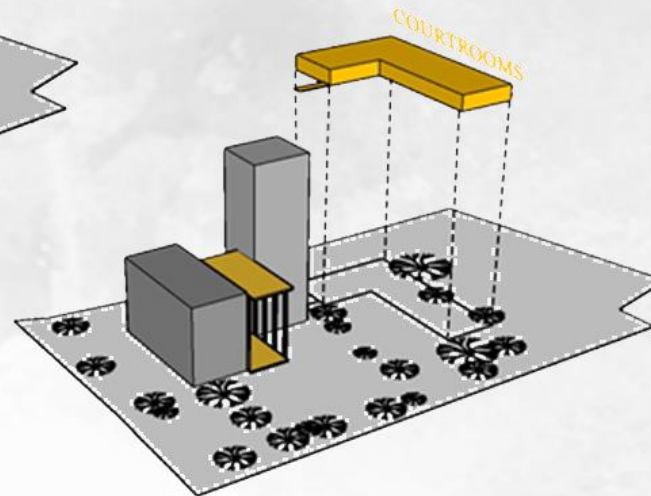
The form is developed respecting the existing site conditions and retaining the trees.



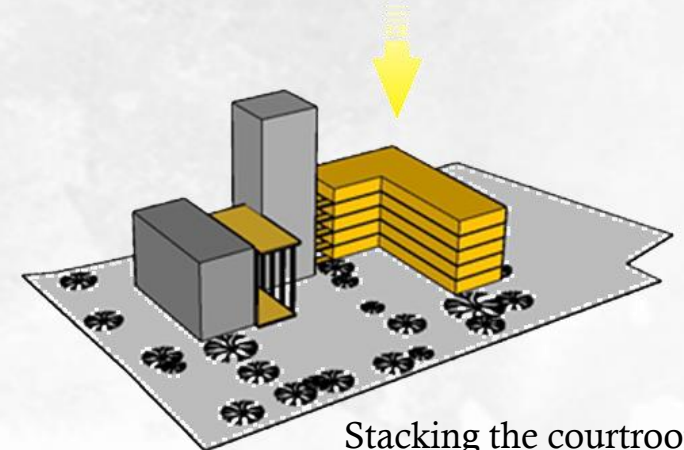
Placing the functional spaces.



Creating hierarchy of volumes

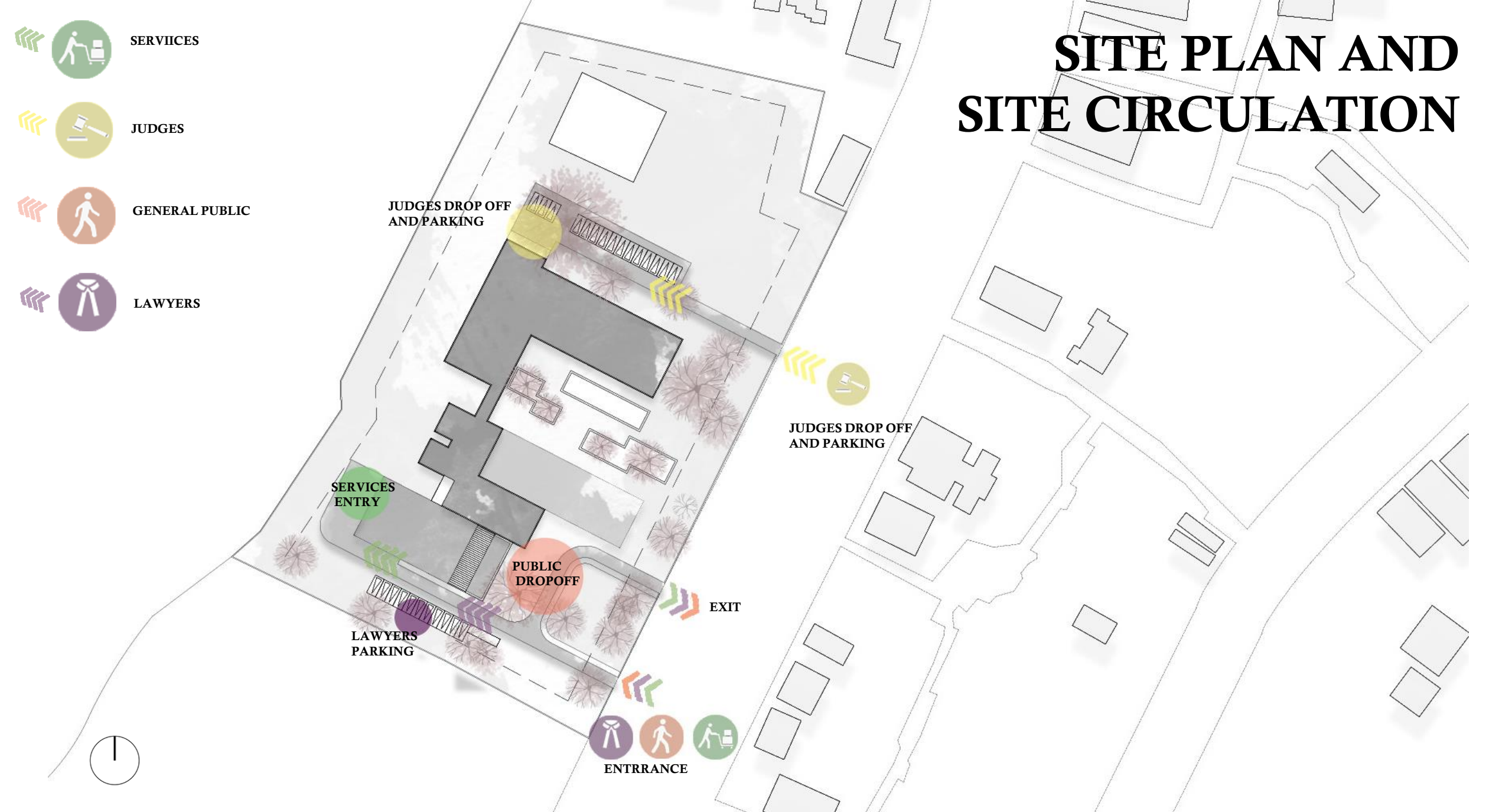


Placing the courtroom module configuration

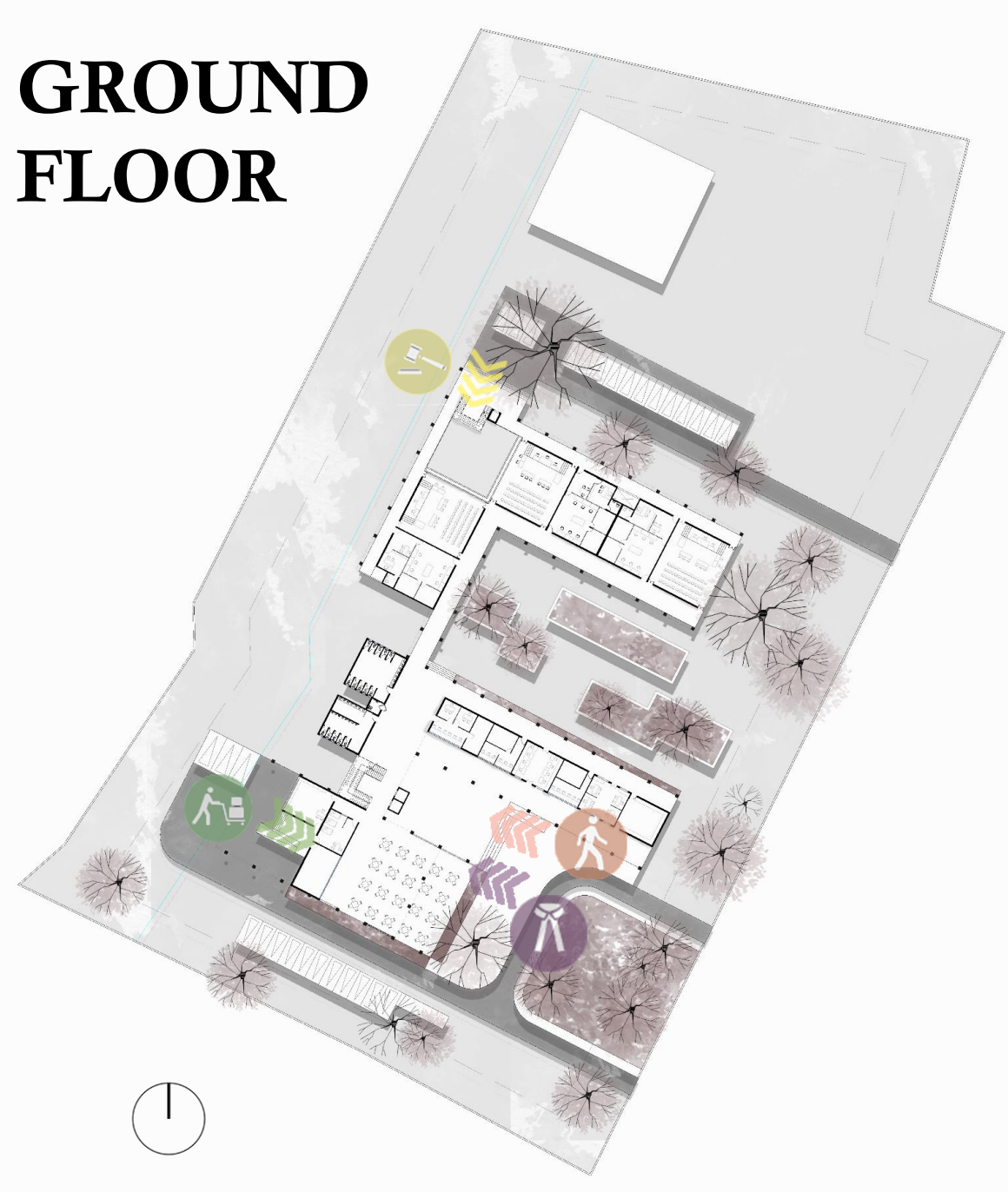


Stacking the courtroom

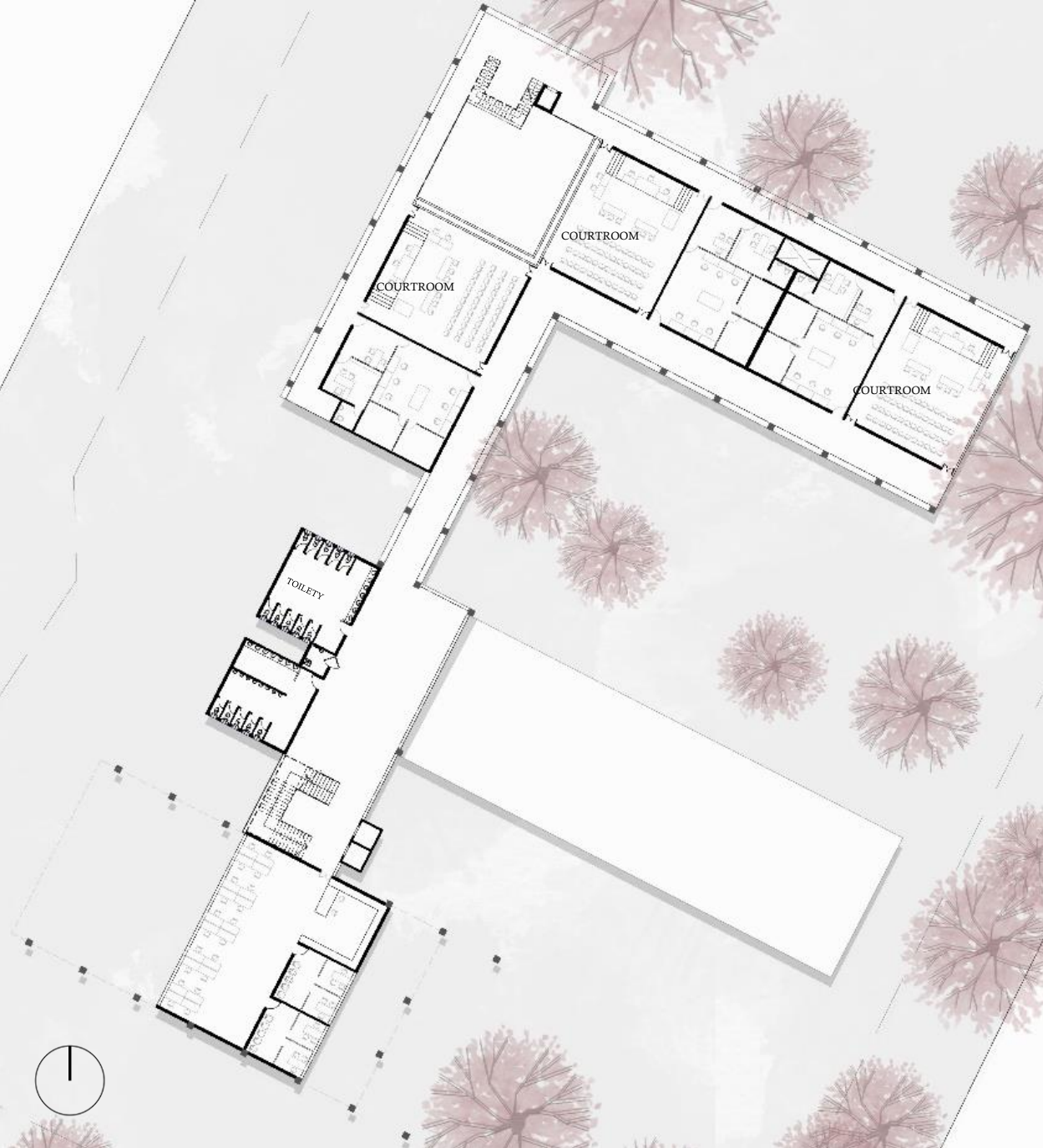
SITE PLAN AND SITE CIRCULATION



GROUND FLOOR



FIRST FLOOR



PUBLIC PROSECUTORS OFFICE

The office is planned as an open concept. Where when clients come in the lawyers can meet with them in the meeting rooms while otherwise working at open desks.



SECOND FLOOR

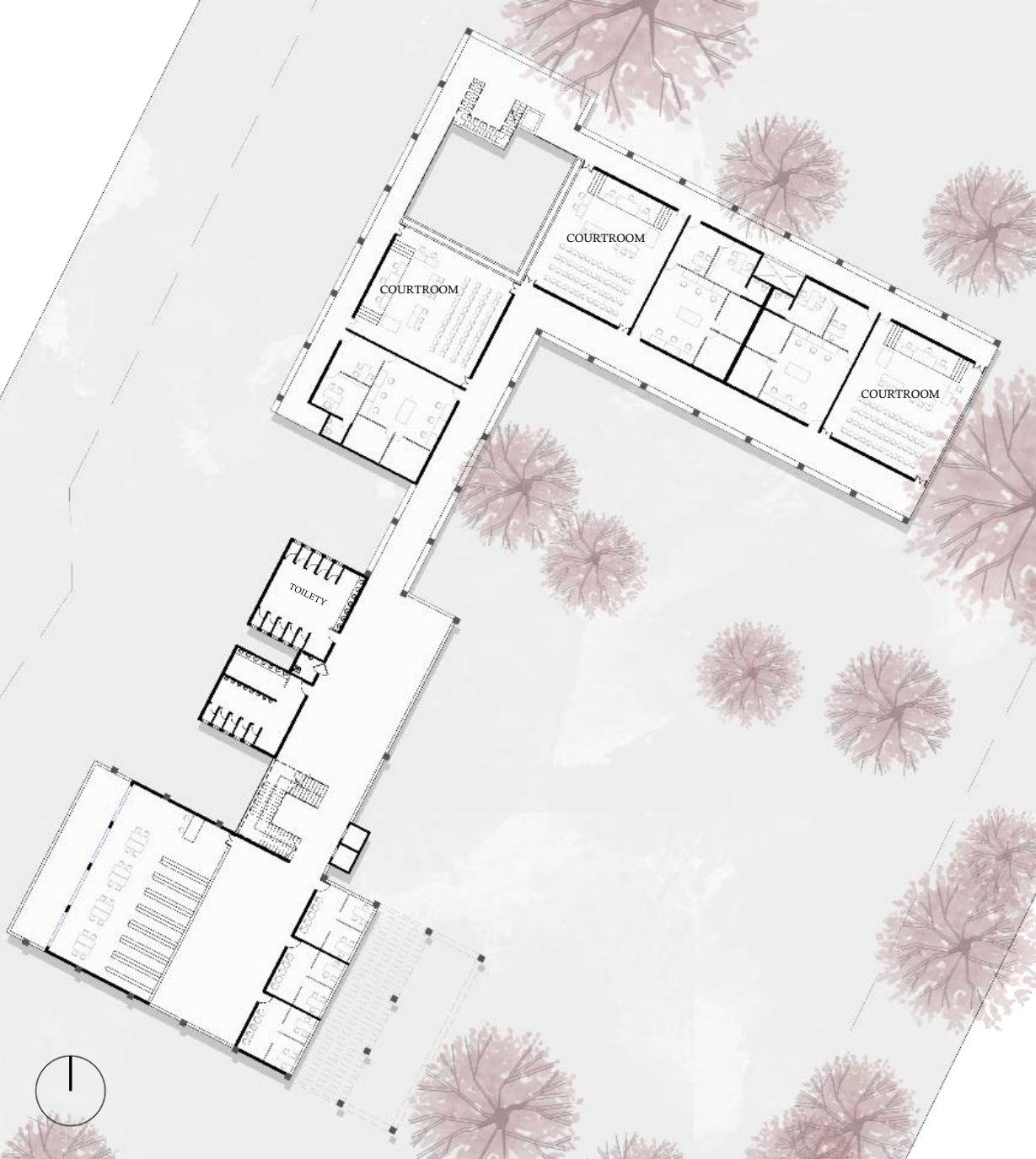


COMMON BAR ROOM

The common bar room contains 2 locker rooms and one conference room. The working area for the lawyers is designed as an open concept working space.

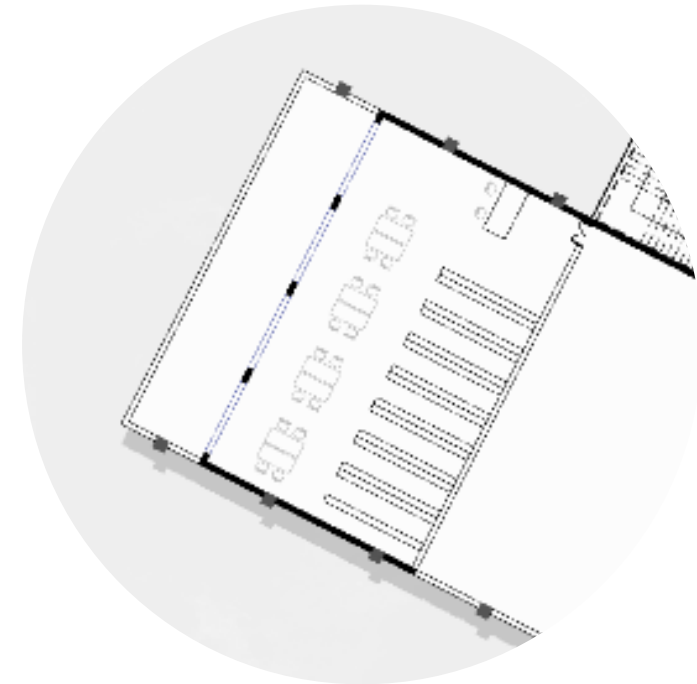


THIRD FLOOR



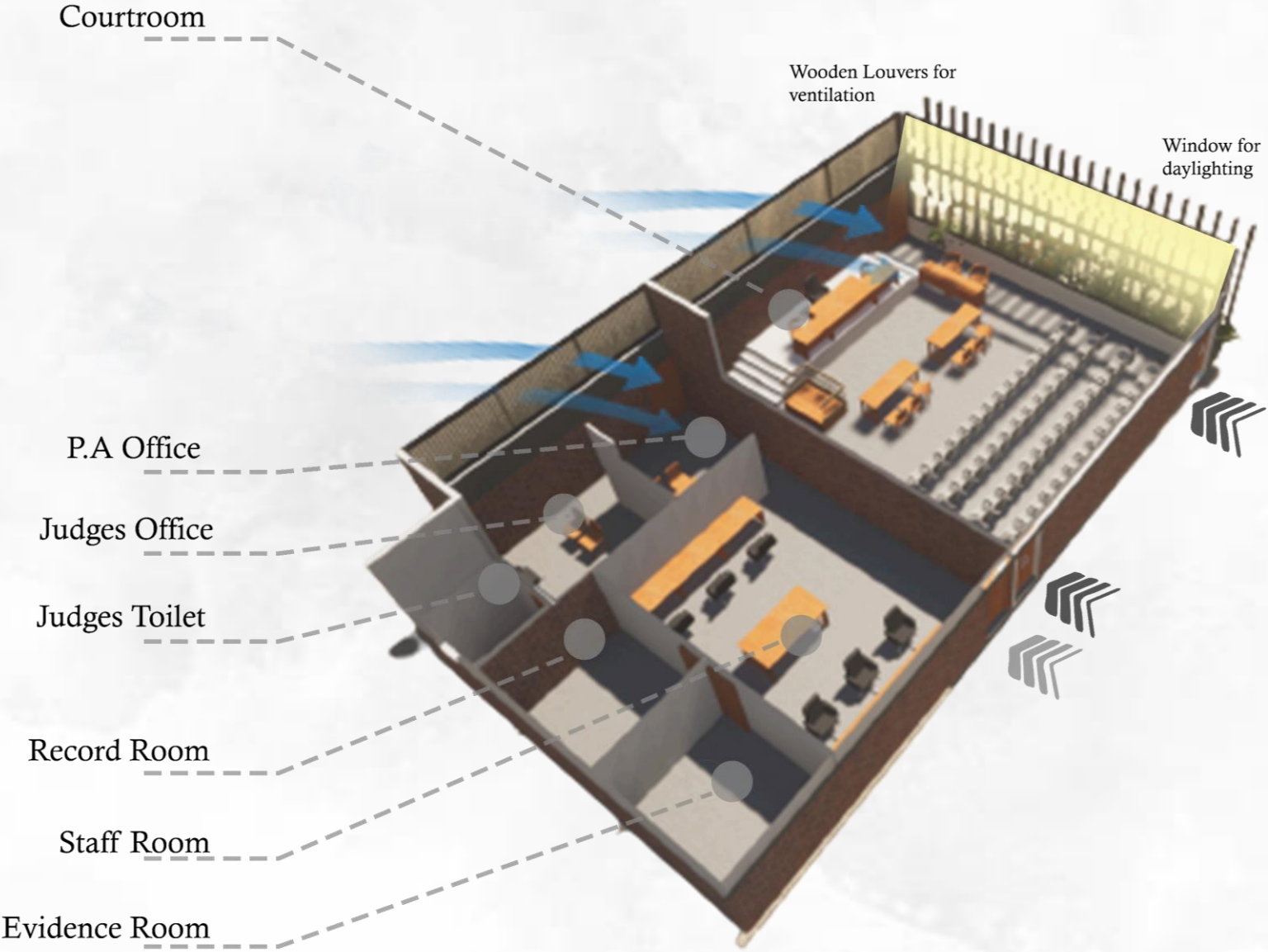
BAR LIBRARY

The bar library is given such that it a quite and private space. It also has a terrace that offer views of the river.

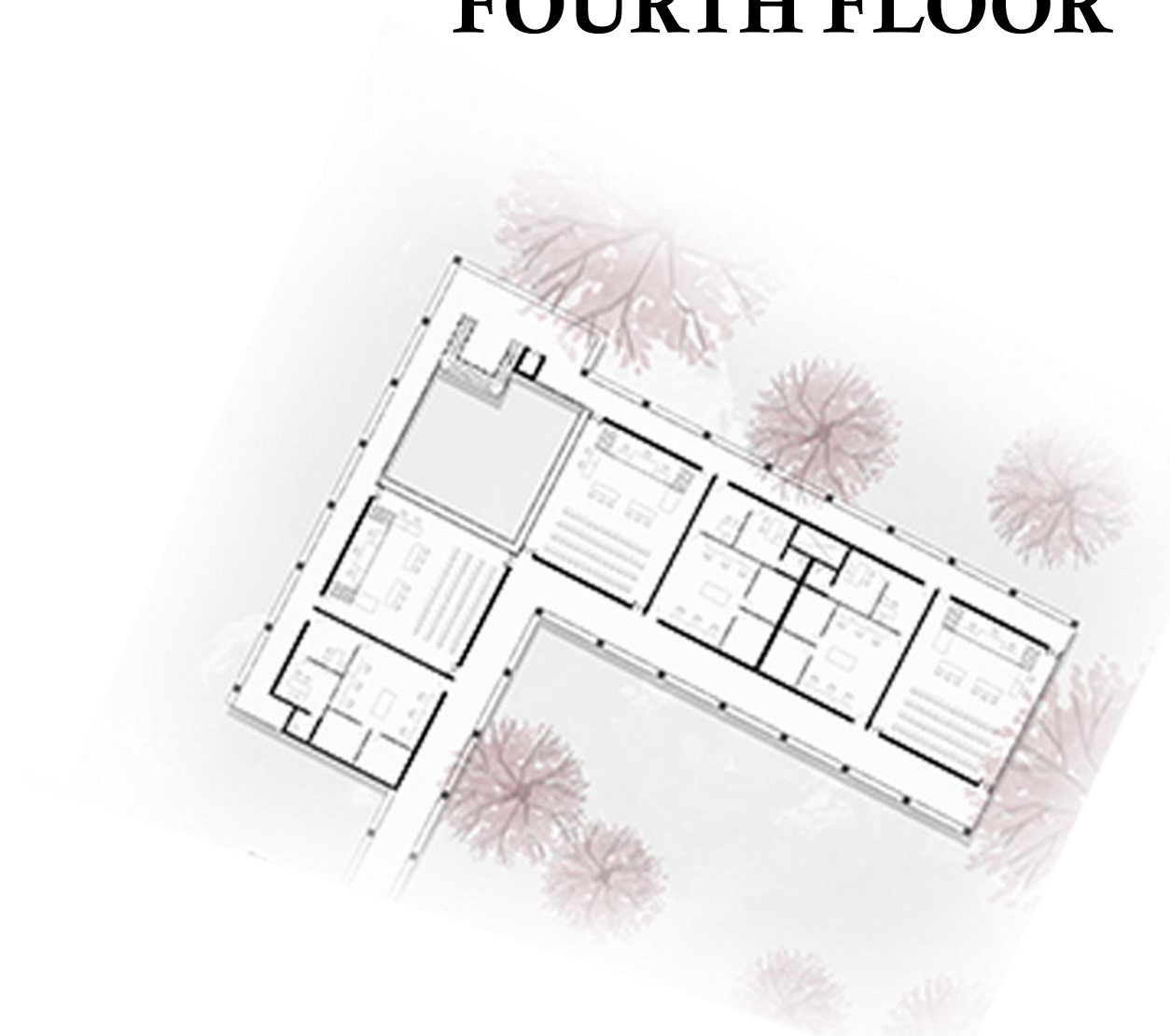
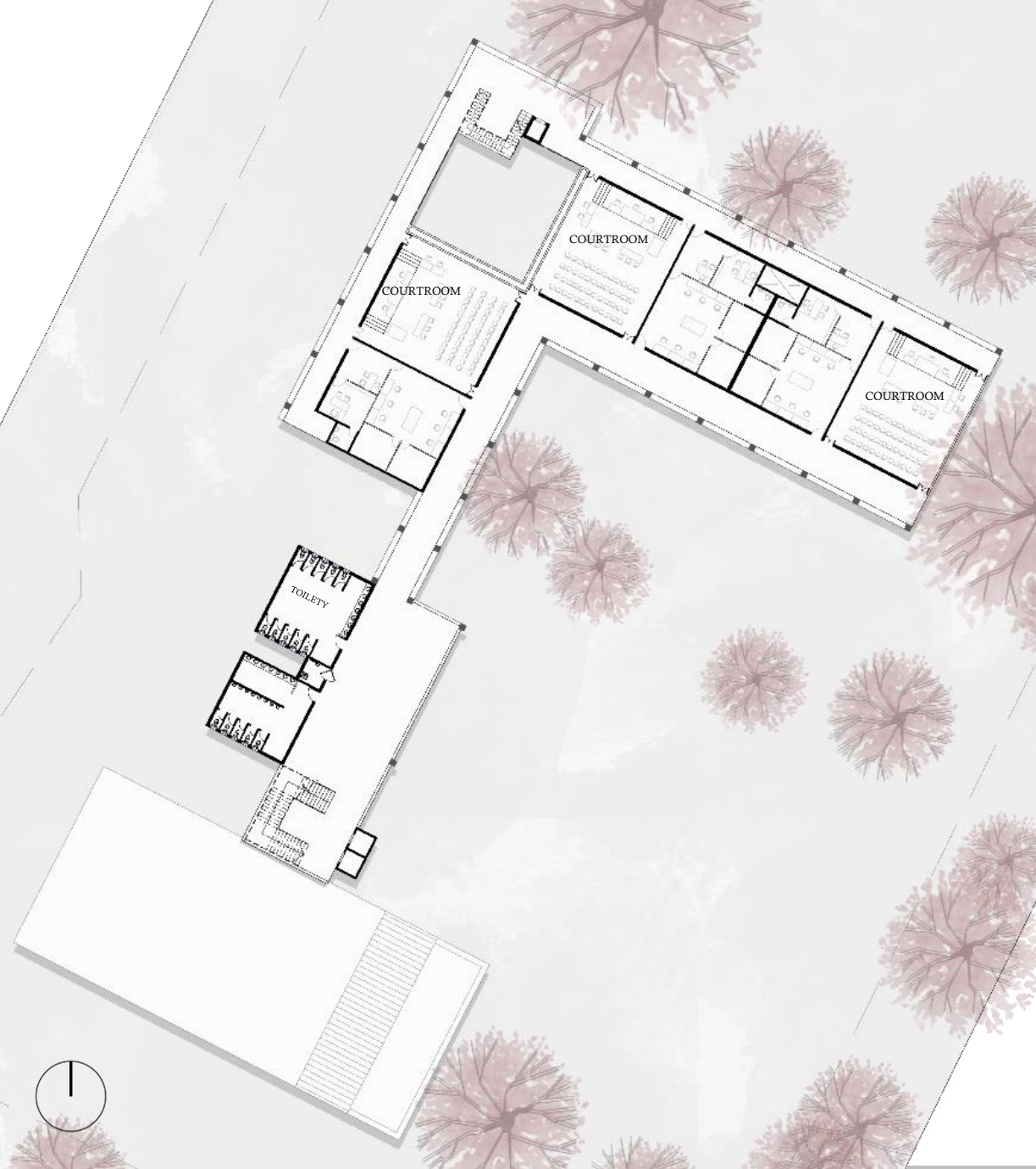


COURTROOM MODULE

The courtrooms are designed as a repeating module. Each courtroom has a attached judges chamber. The module is designed for maximum daylighting and ventilation in minimal space. It can be configured in any way provided one façade remains free for windows.



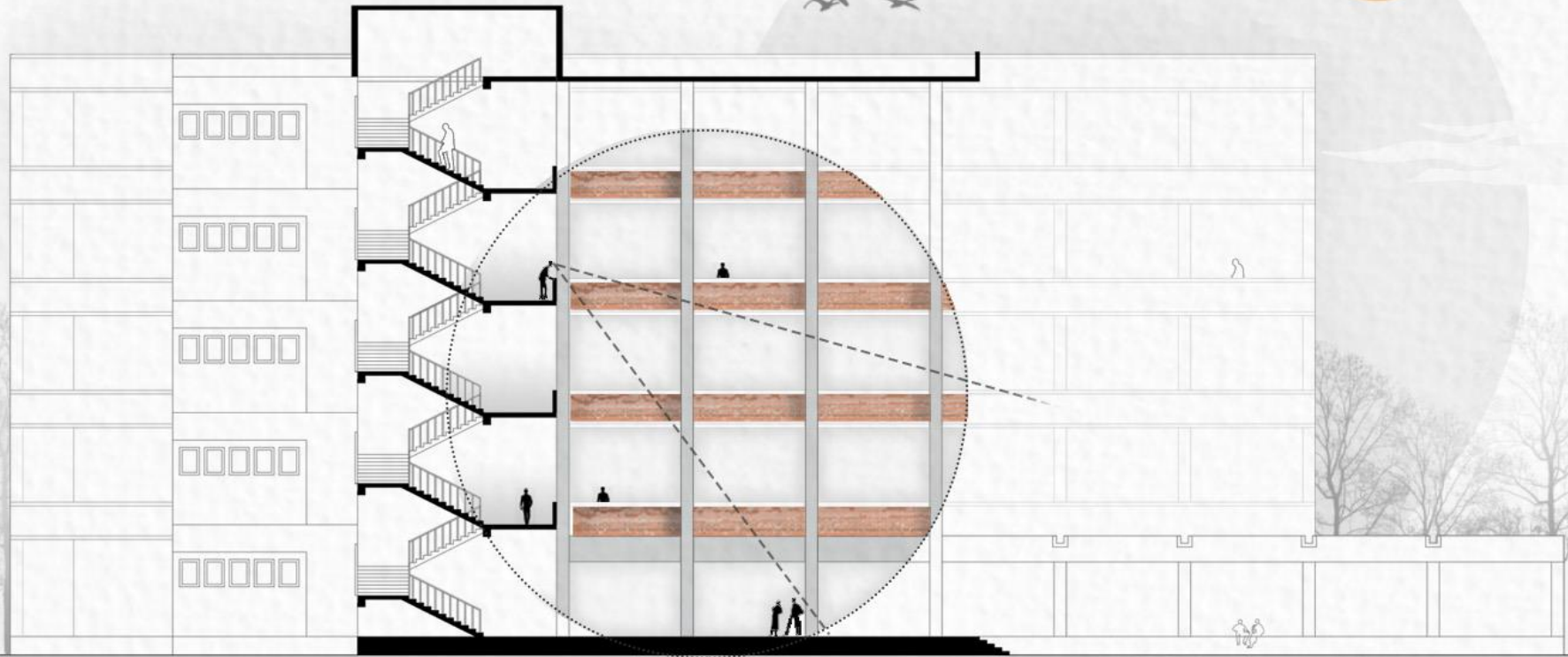
FOURTH FLOOR



Configuration of courtroom modules for maximum ventilation and natural light.



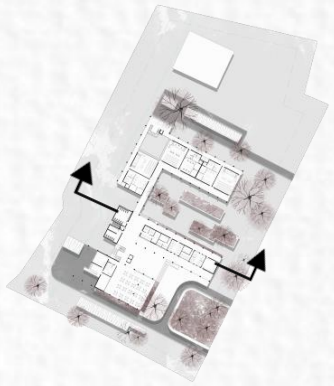
24.5m
23.0m
18.75m
14.5m
9.75m
5.25m
4.8m
3.7m
0.75m



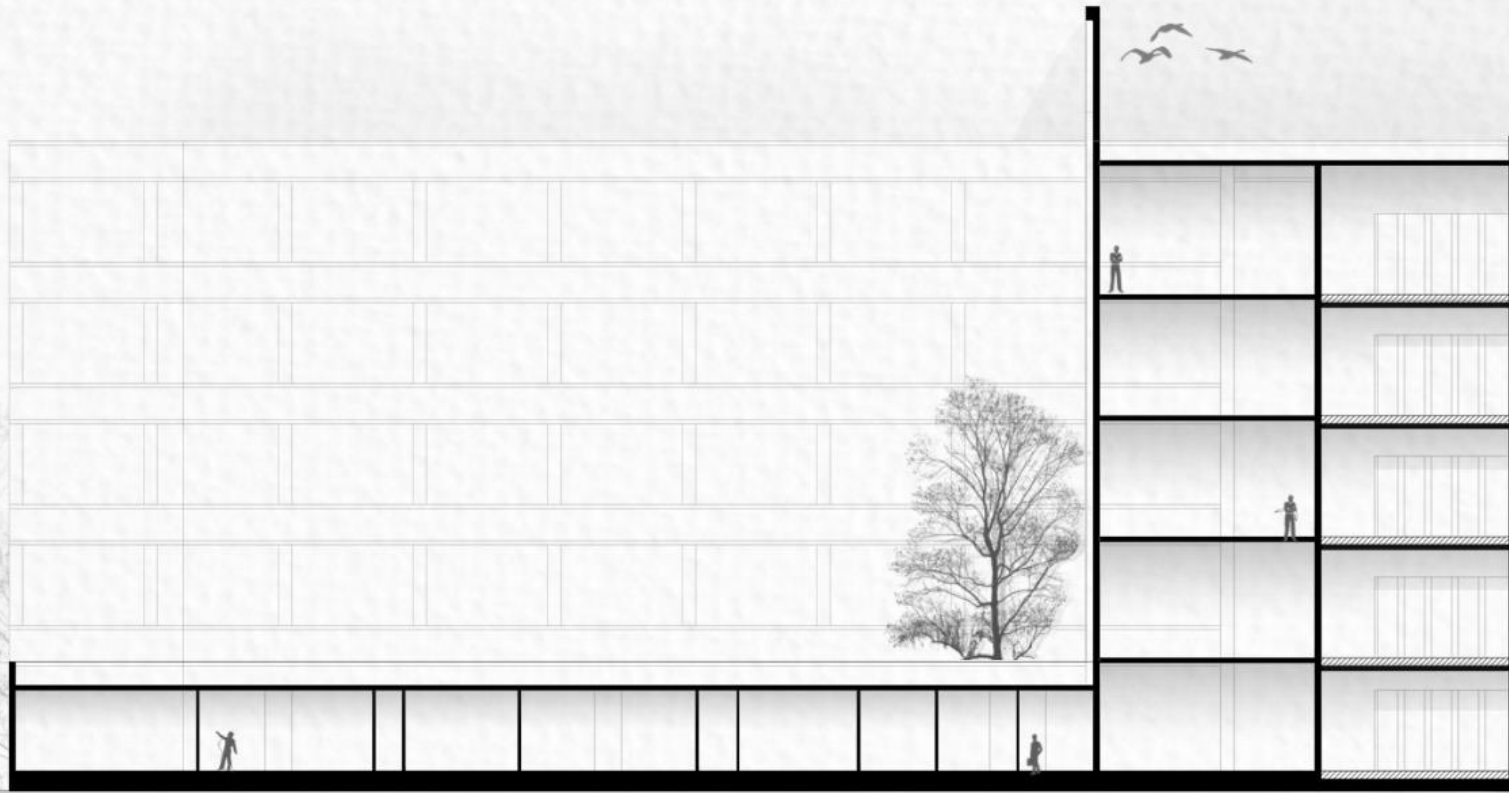
STAIRCASE BLOCK

ENTRANCE FOYER

SECTION 1



24.5m
23.0m
18.75m
14.5m
9.75m
5.25m
4.0m
3.7m
0.75m



FILING CELL

NOTARY

TYPIST

PROPERTY AND
CASH ROOM

REGISTRAR

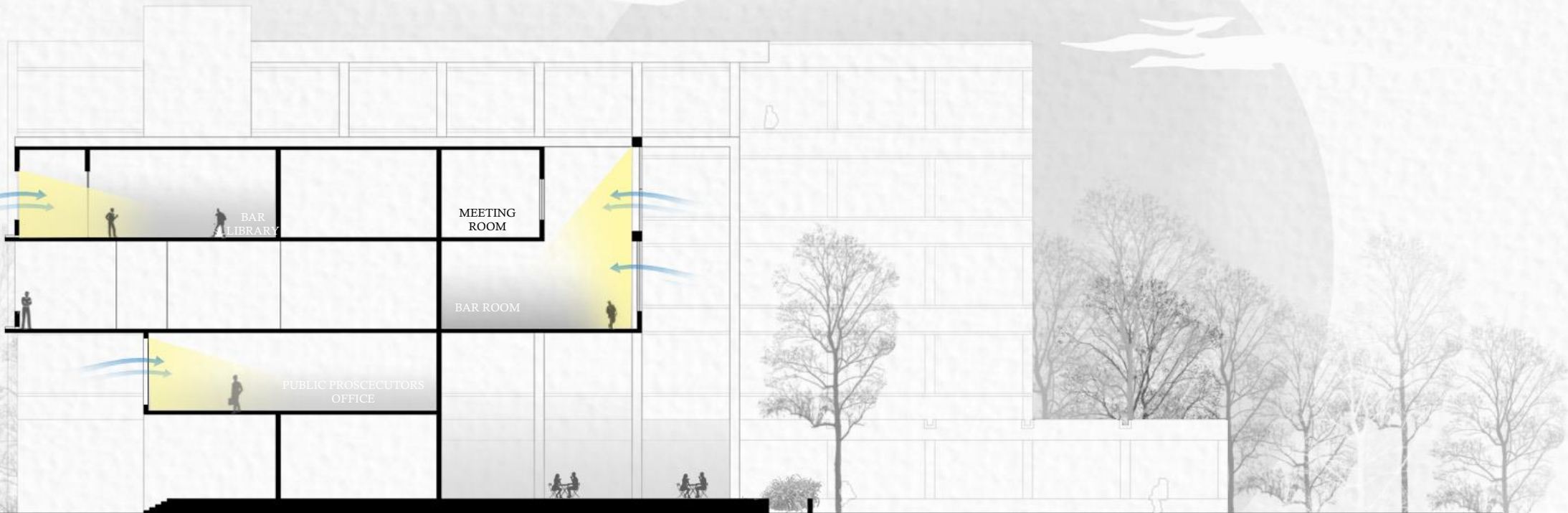
PUBLIC
LOBBY

PUBLIC
TOILET

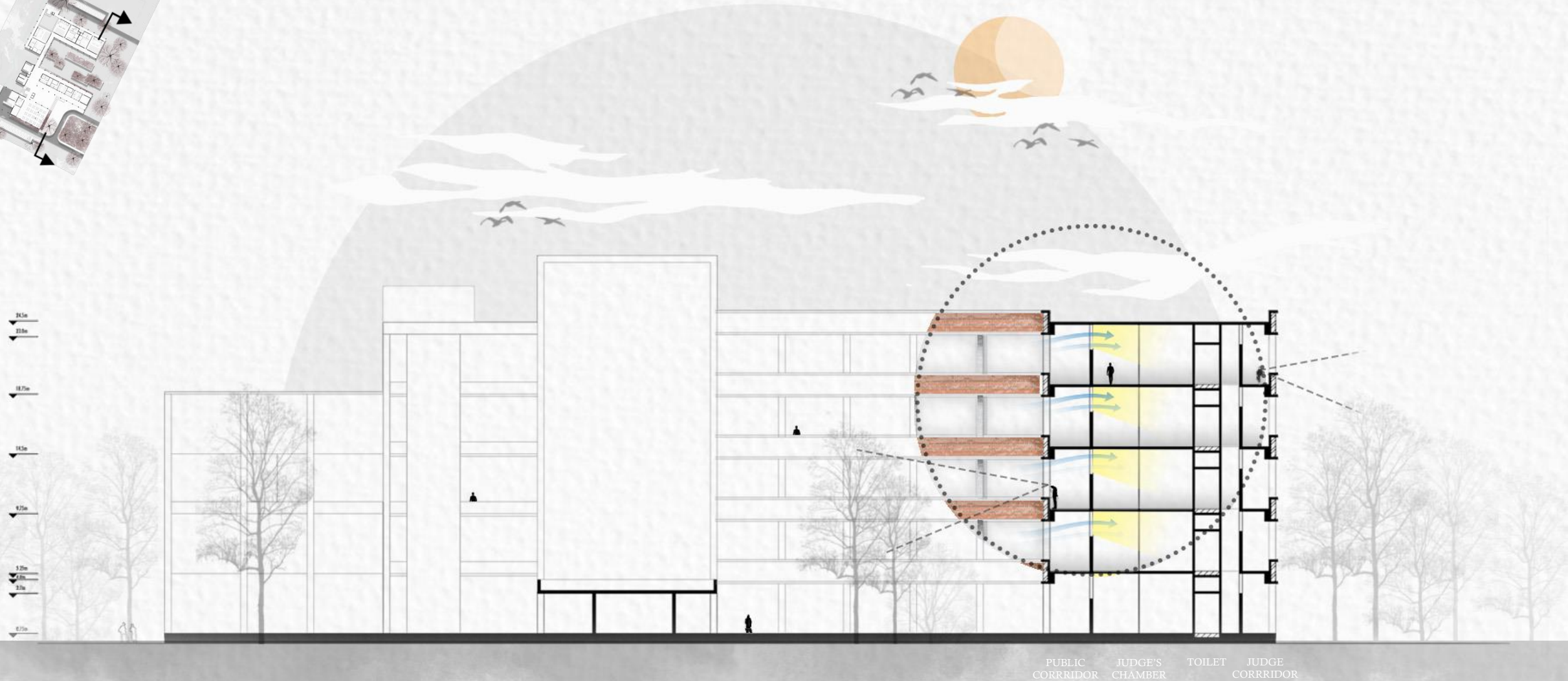
SECTION 2



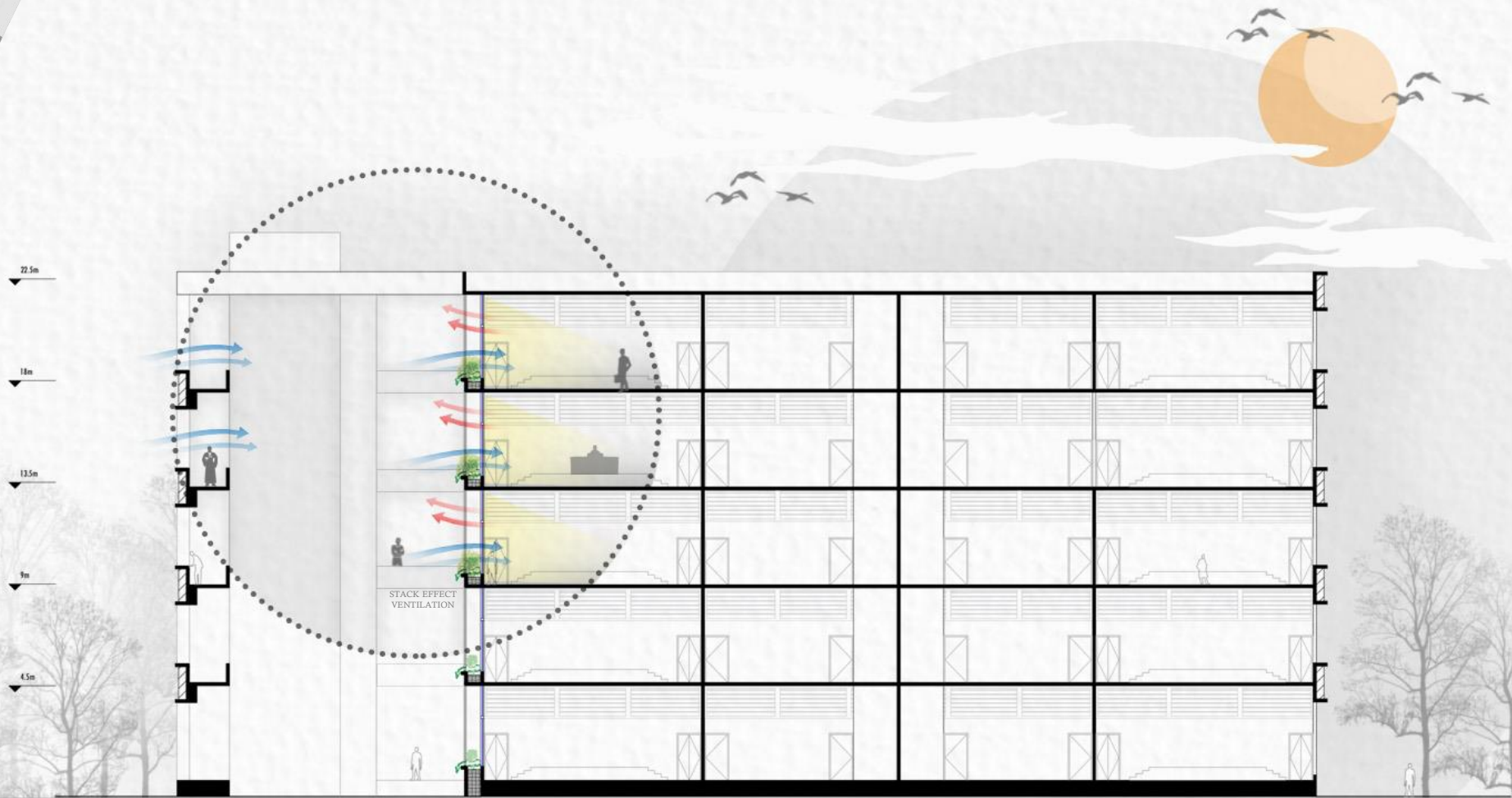
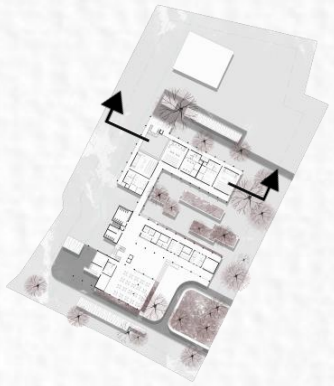
24.5m
23.0m
18.75m
14.5m
9.75m
5.25m
4.8m
3.7m
0.75m



SECTION 3



SECTION 4



LIGHT WELL

COURTROOM

JUDGES CHAMBER

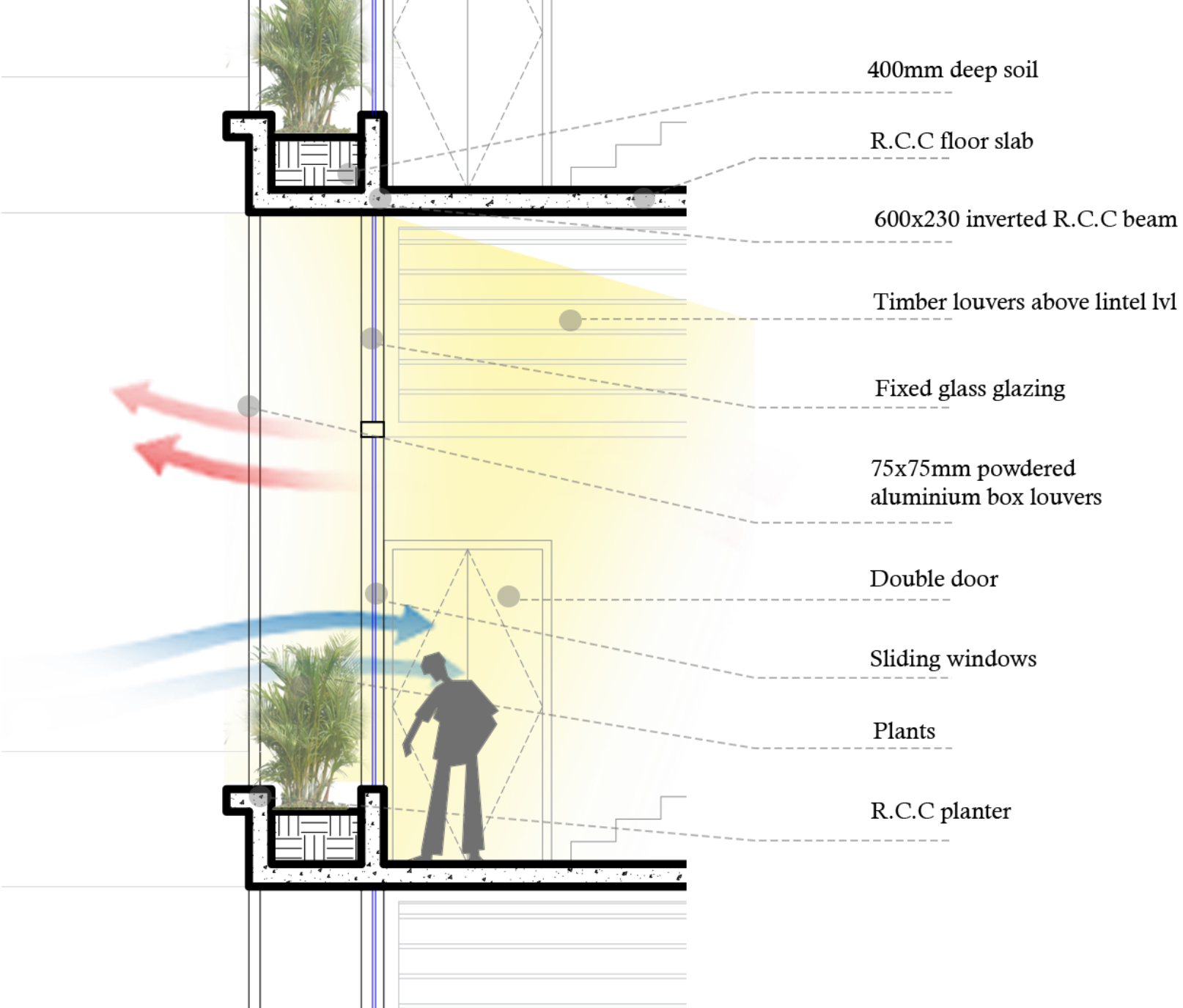
JUDGES CHAMBER

COURTROOM

STACK EFFECT VENTILATION

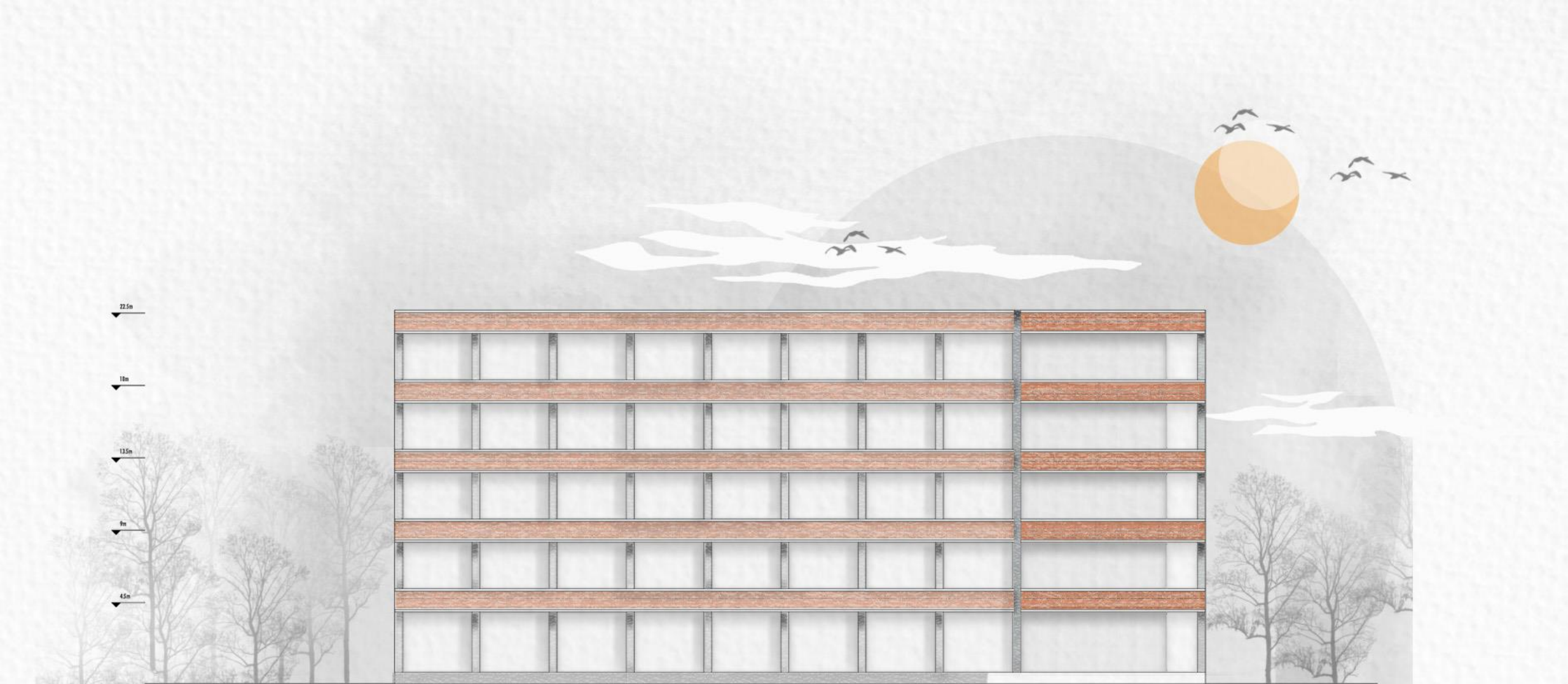
SECTION 5

COURTROOM WINDOW AND PLANTER DETAIL





EAST ELEVATION



NORTH ELEVATION

FAÇADE DETAIL

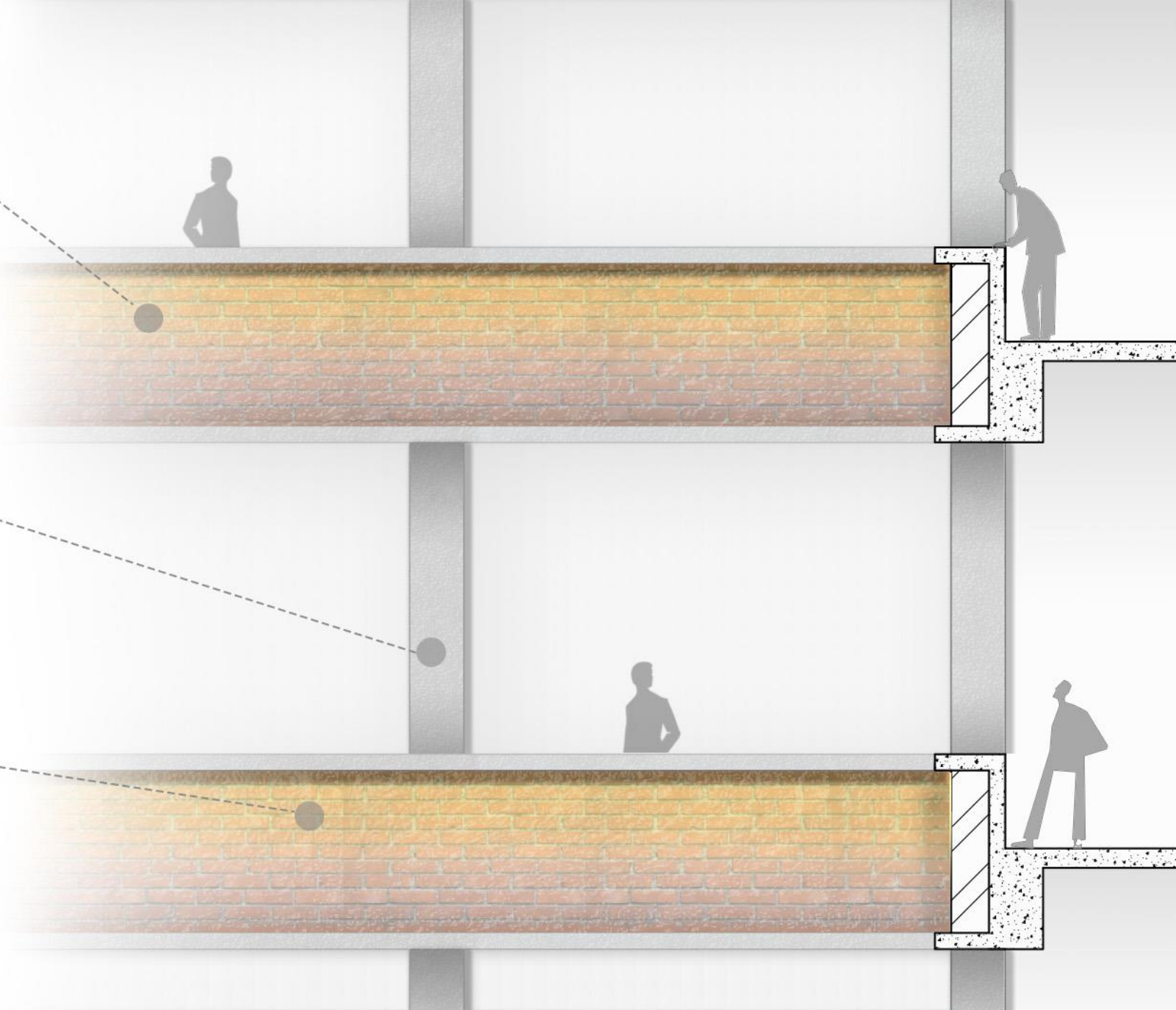


EXPOSED
BRICK

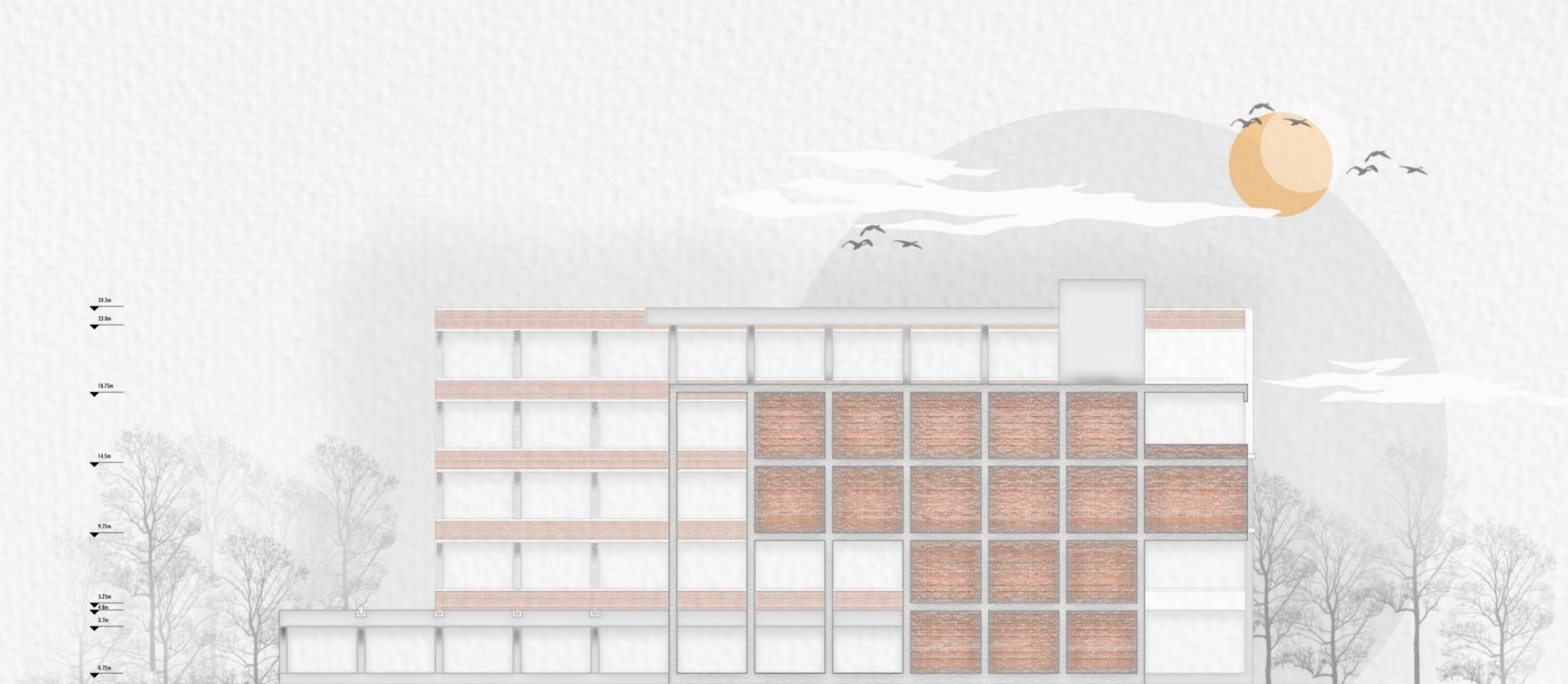


EXPOSED
CONCRETE

The façade is composed of simple materials. The clay brick and the exposed concrete provide a contrast on the façade. These bands act as railings as well as weather protection for the lower floors.

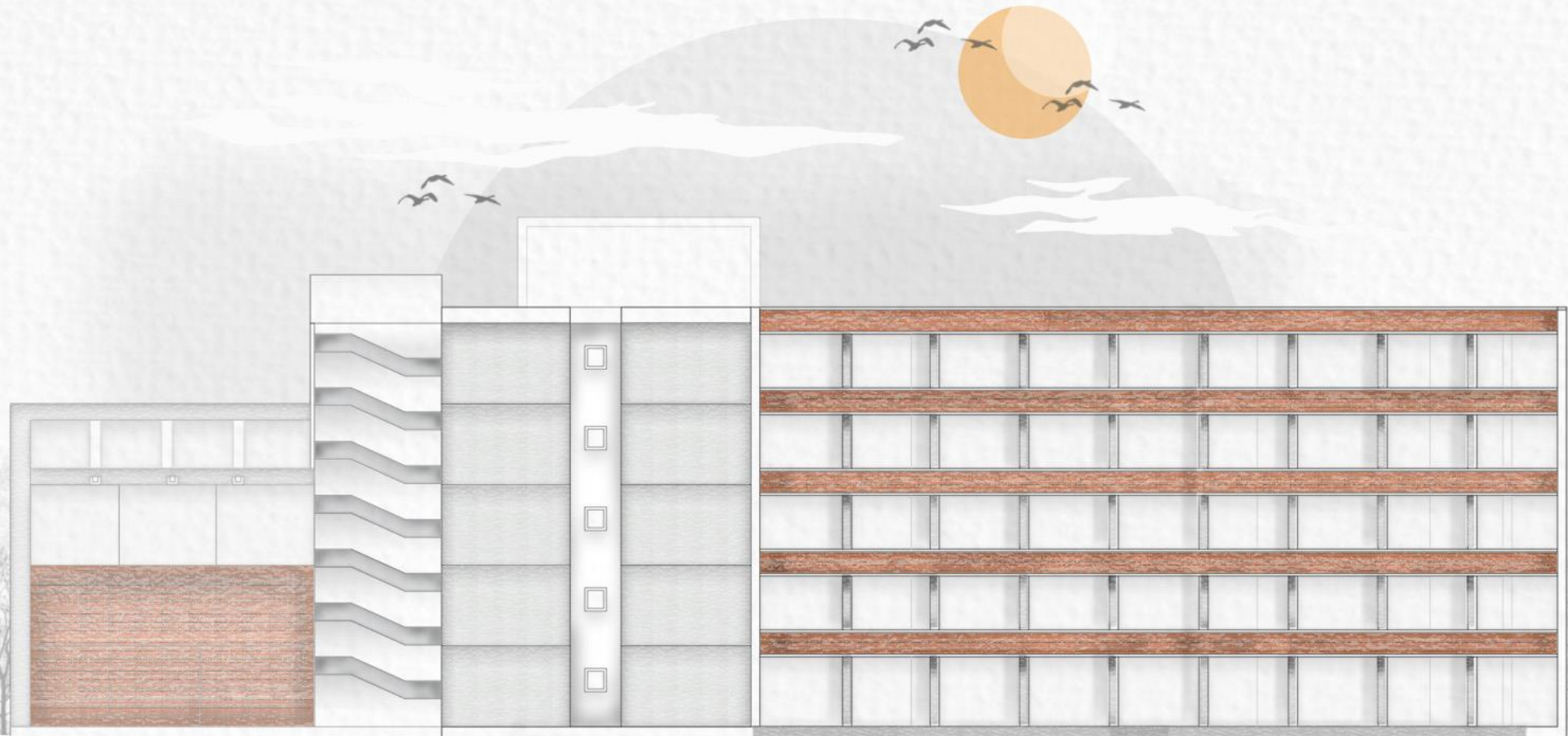


FACADE LIGHTING



SOUTH ELEVATION

24.5m
21m
18.75m
14.5m
9.75m
5.25m
4.8m
3.1m
1.75m



WEST ELEVATION

VIEWS

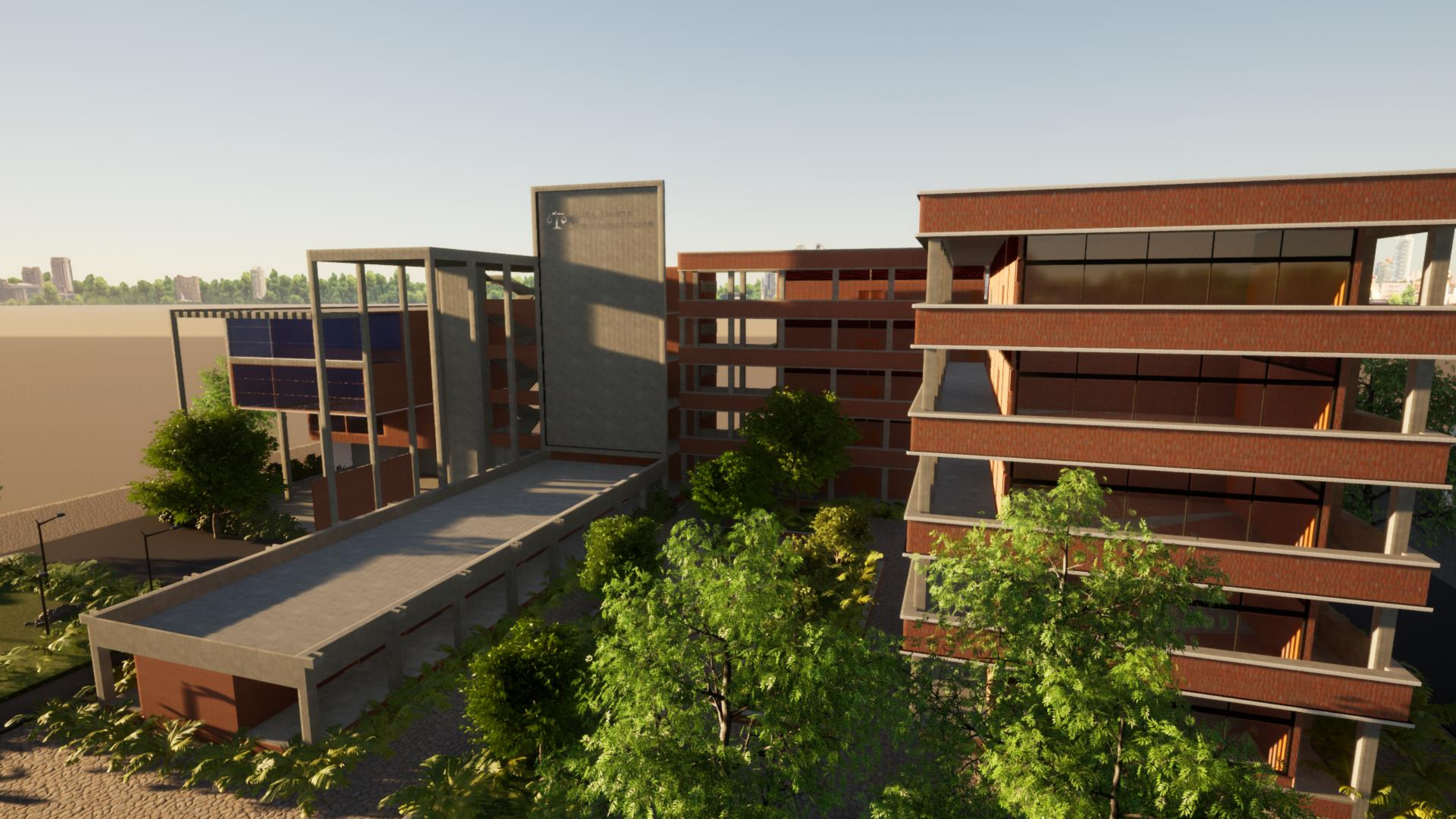


VIEW OF THE ENTRANCE
FOYER



VIEW FORM THE CENTRAL
OPEN SPACE





NIGHT VIEW



VIEW FORM THE MAIN
ENTRANCE



VIEW FORM THE PUBLIC
CORRIDORS



VIEW OF THE CENTRAL
OPEN SPACE



**THANK
YOU**

