

THE URBAN BACKYARD

Semester VI | Architectural Design

Location: Chembur, Mumbai, India

The Project:

It intended to design **an inclusive and self sufficient environment** for community development. It was also aimed to bridge the gap between the community and the visitors by **provisioning spaces for interaction**.

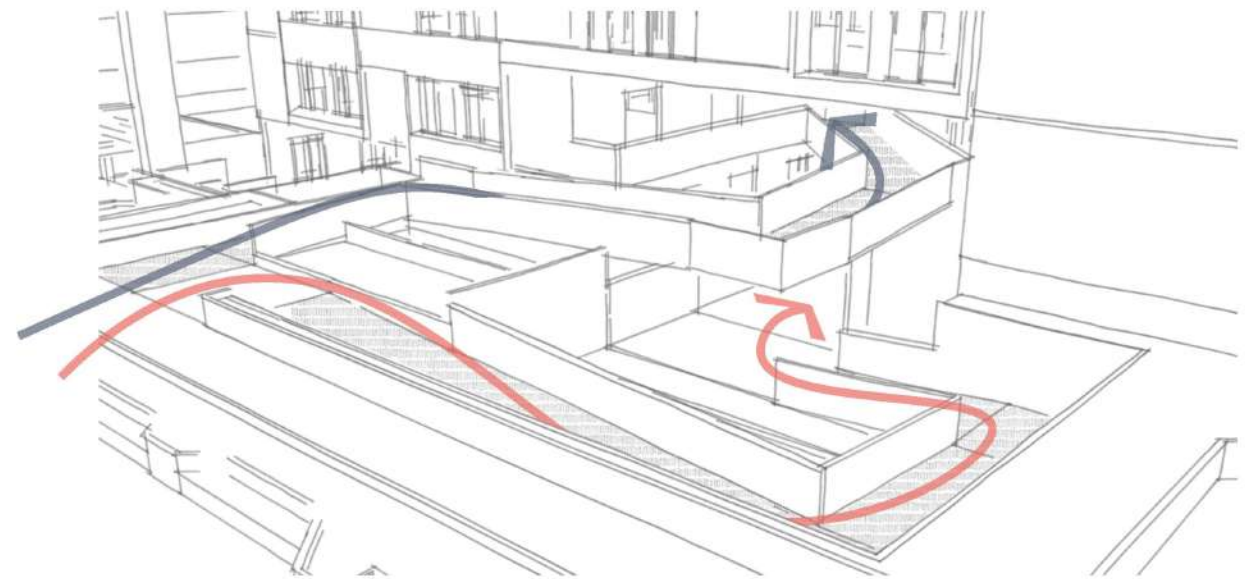
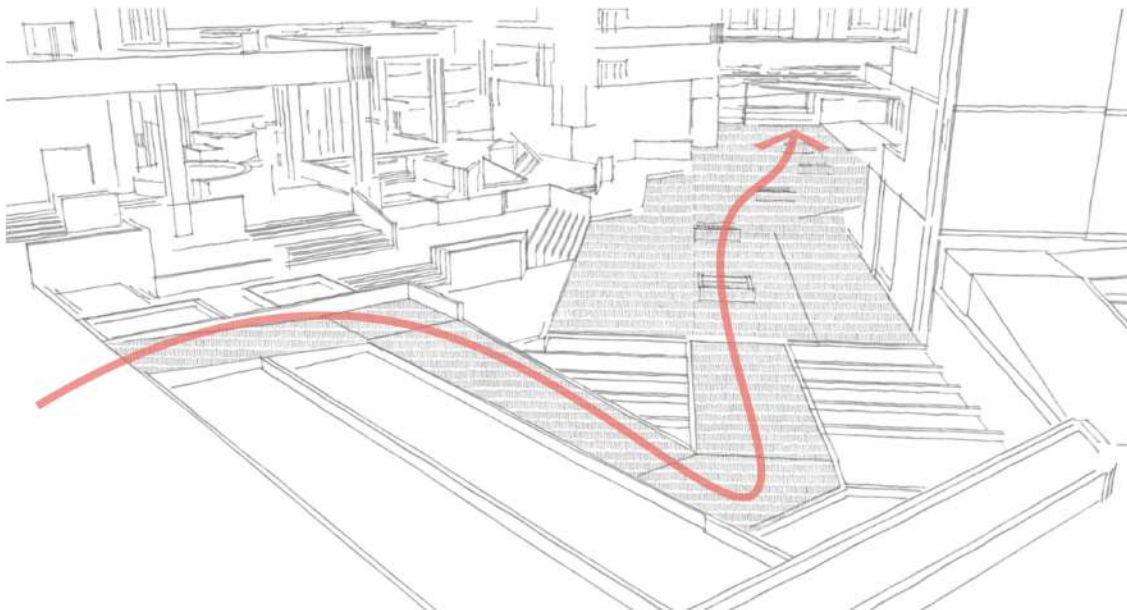
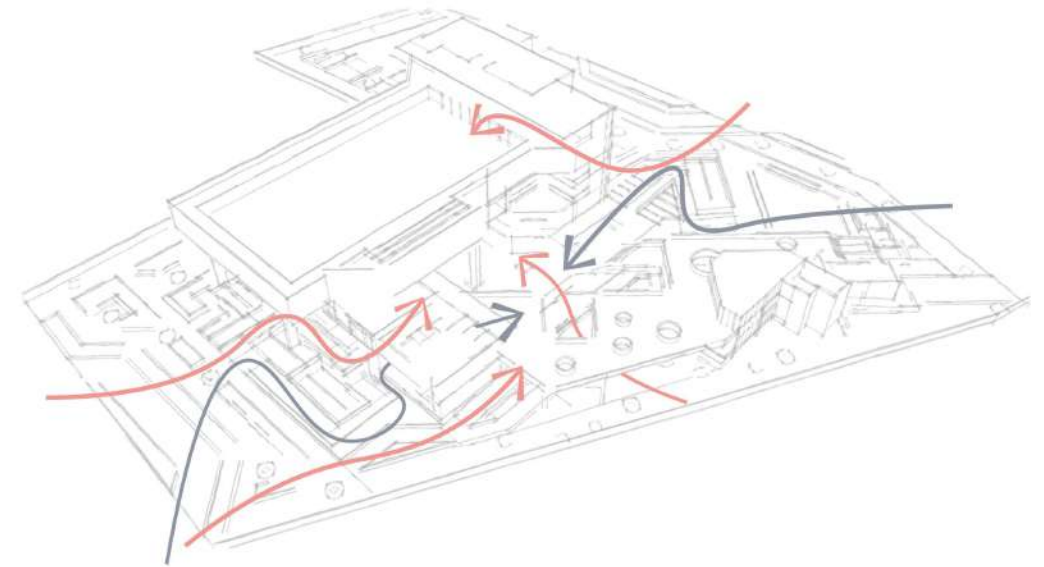
Various interactive, expressive and skill building activities would help promote **self-sufficiency**.

Journey and Movement

Each movement through the site and the structure **creates a story and an experience**. The story may relate to the function, activity patterns, and experiences of the users.

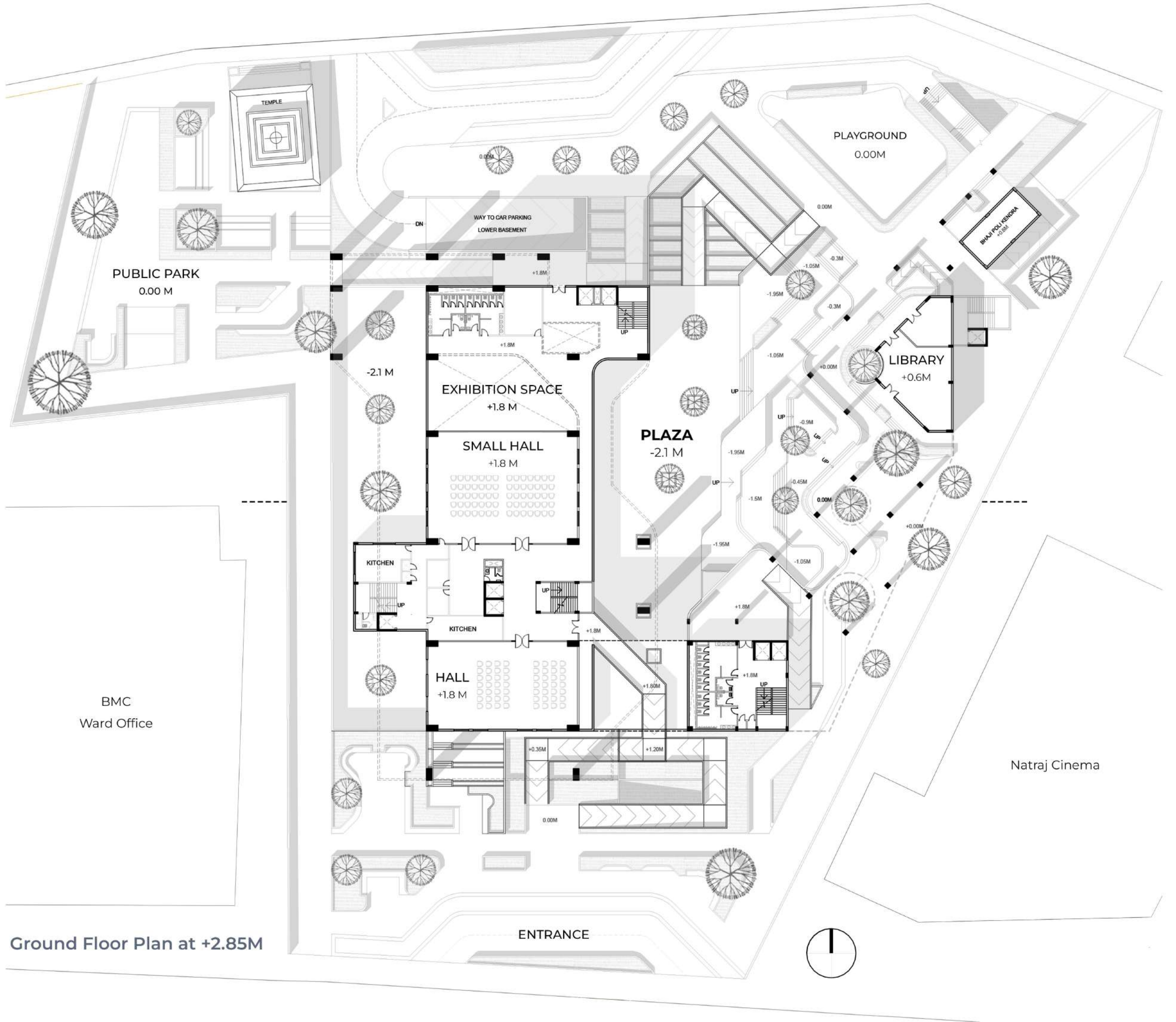
The user is taken along a fixed path which branches and undulates to create multiple narratives.

Although the user is the same, **the paths taken may differ and in turn the experience of the site**.



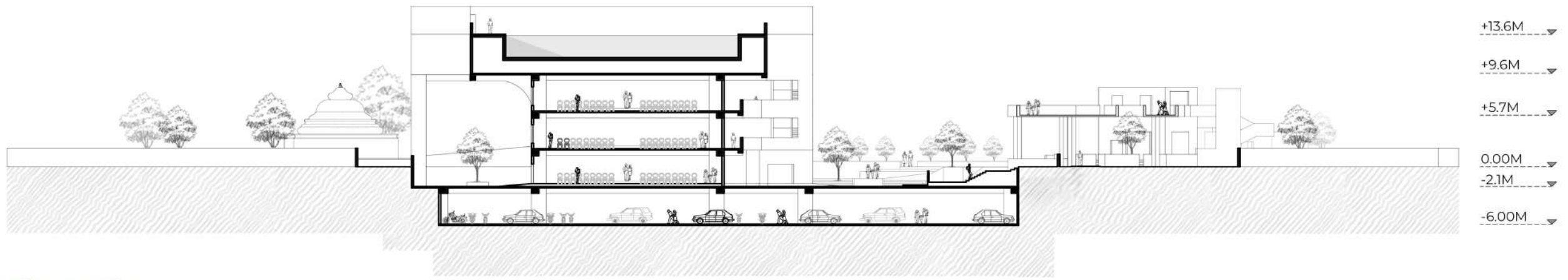
The Plaza is at -2.1M, which can be accessed through **multiple ramps** and is a multifunctional space. Ramps are set between **stepped flower beds** which leads one to the Public Plaza.

16M Wide Road



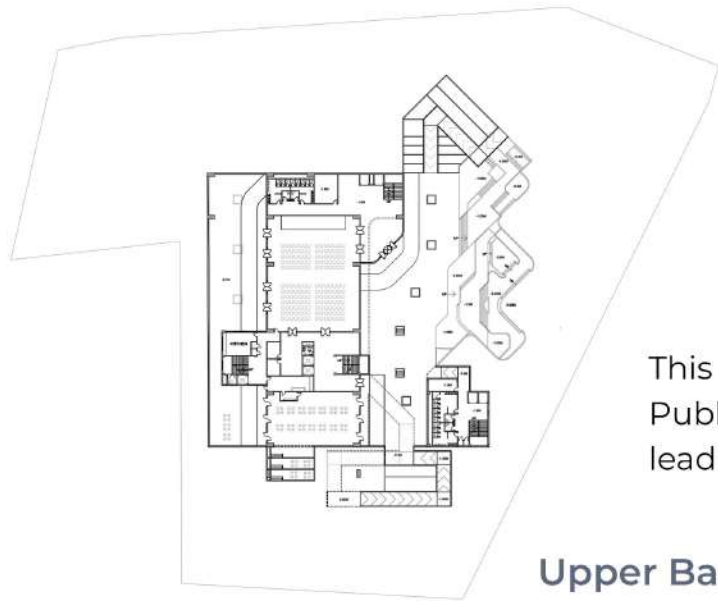
Ground Floor Plan at +2.85M

10M Wide Road



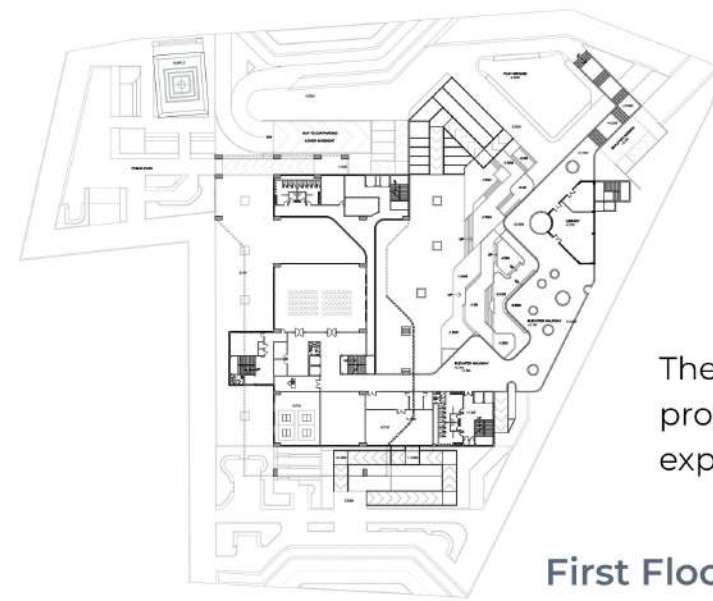
Site Section





This sunken part consists of the Public Plaza and ramps, steps leading towards it.

Upper Basement Plan at -1.8M



There is a bridge with trees protruding out giving an experience at a height.

First Floor Plan at +5.8M

