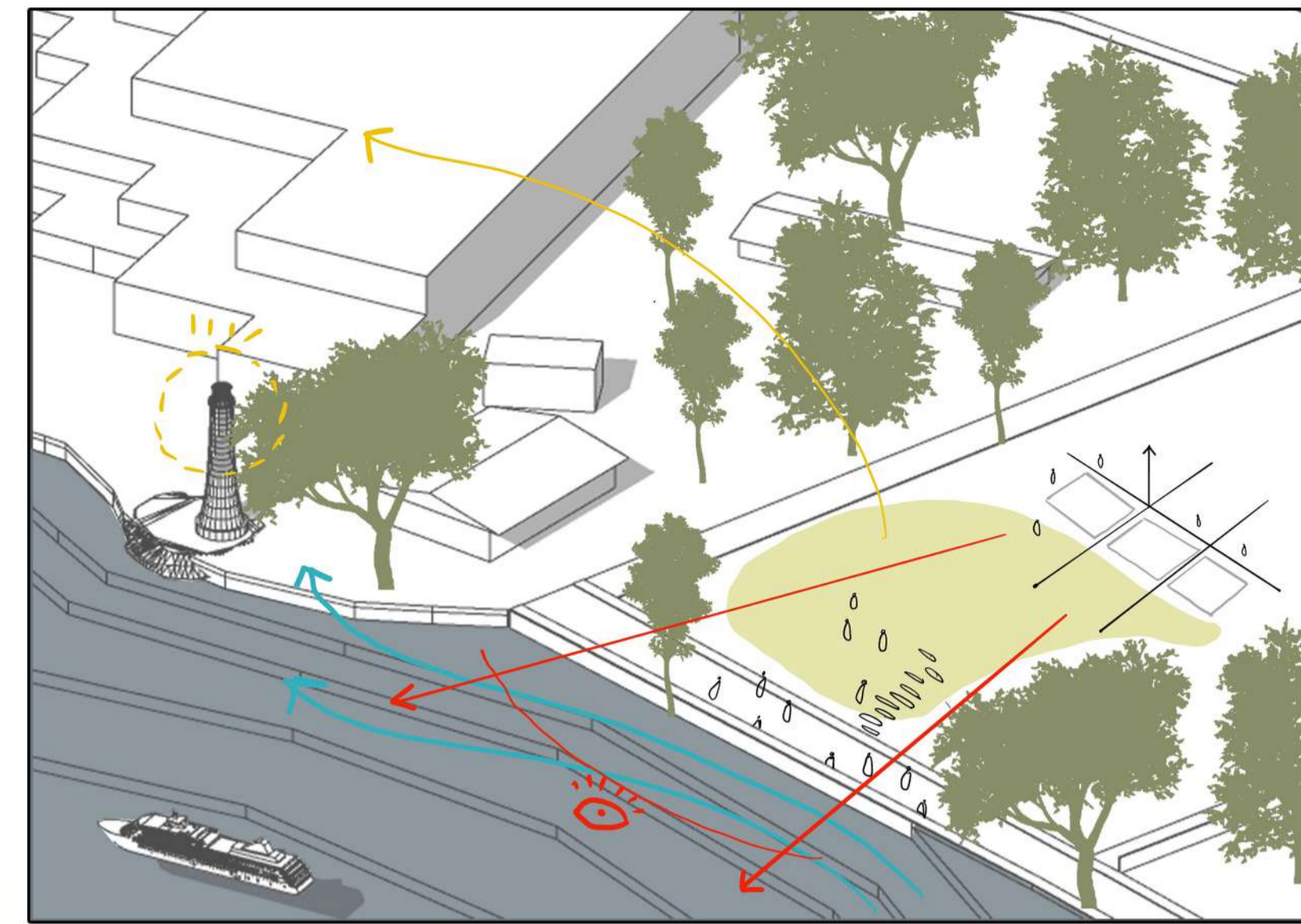
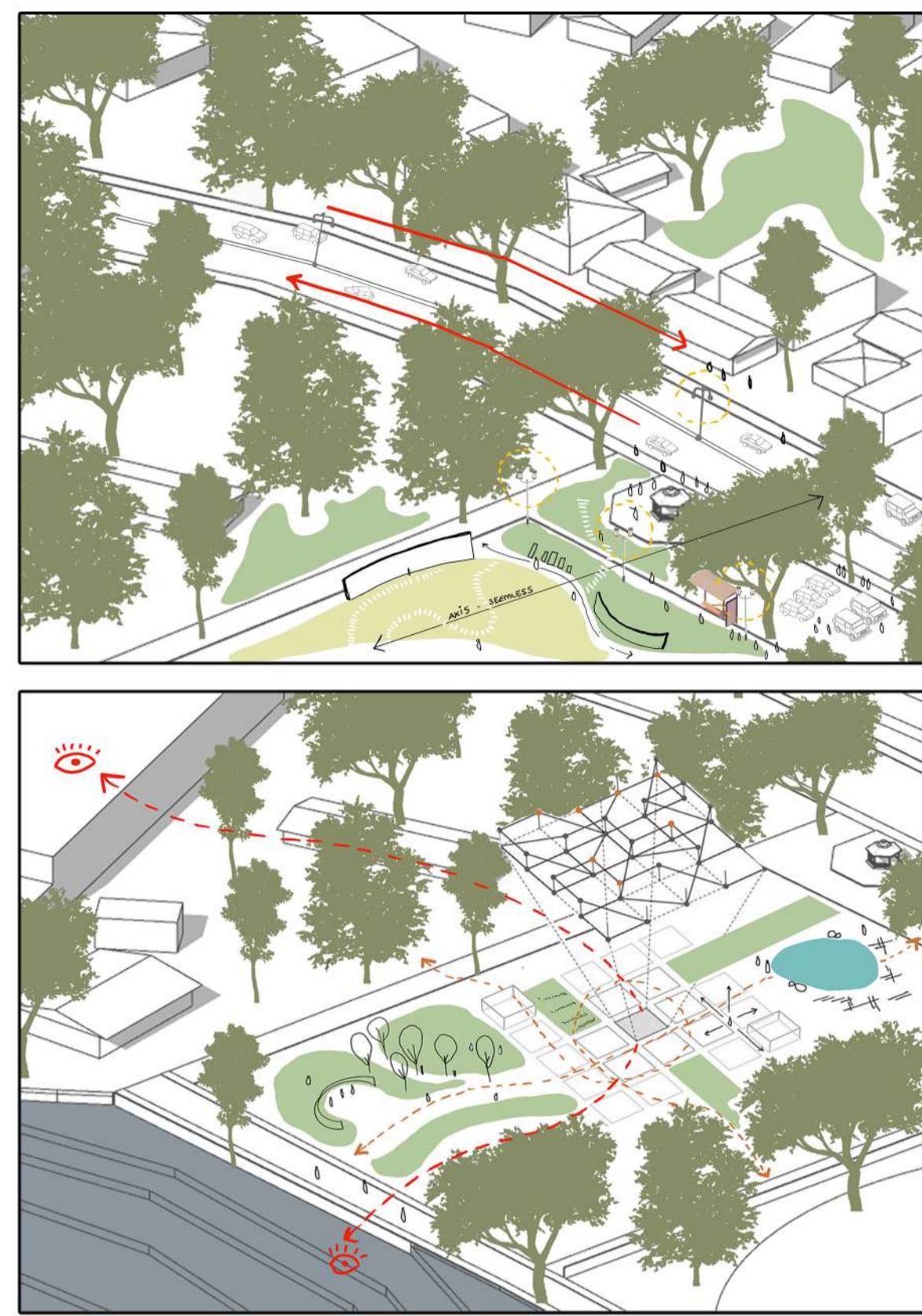


# Urban insert



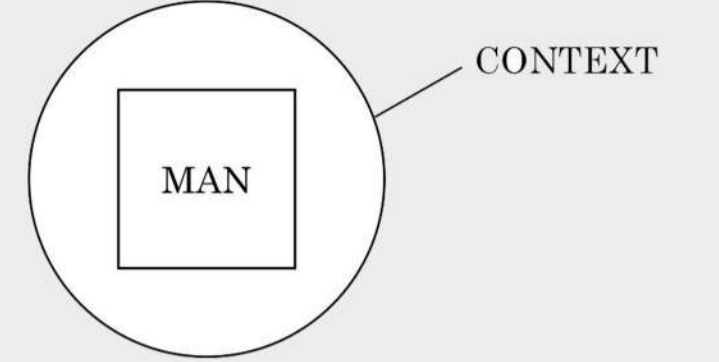
The insert here, can be looked at as a resting, recharging and enlightening container for the volume of people around the premise.



The movement along the memorial phases out in zones each opening out to the landscape of the memorial which finally opens out to the central display gallery. The progression of the zones allows each space to flow out towards the centre which ties down the entire memorial together.

# how it works?

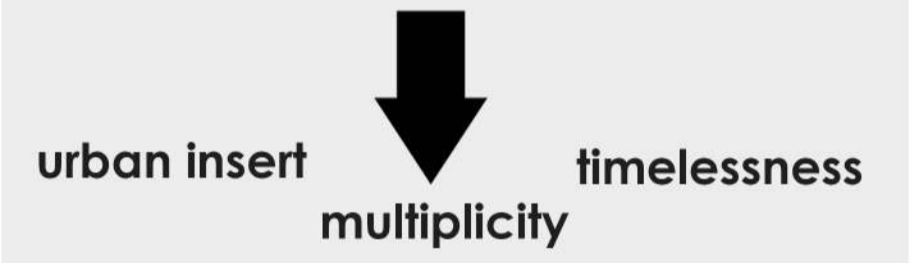
The idea is to track the curve of Charles Correa and take the idea of the memorial to the next point, the way we have achieved this is by looking at 3 broad concepts



tracing the curve of Charles Correa

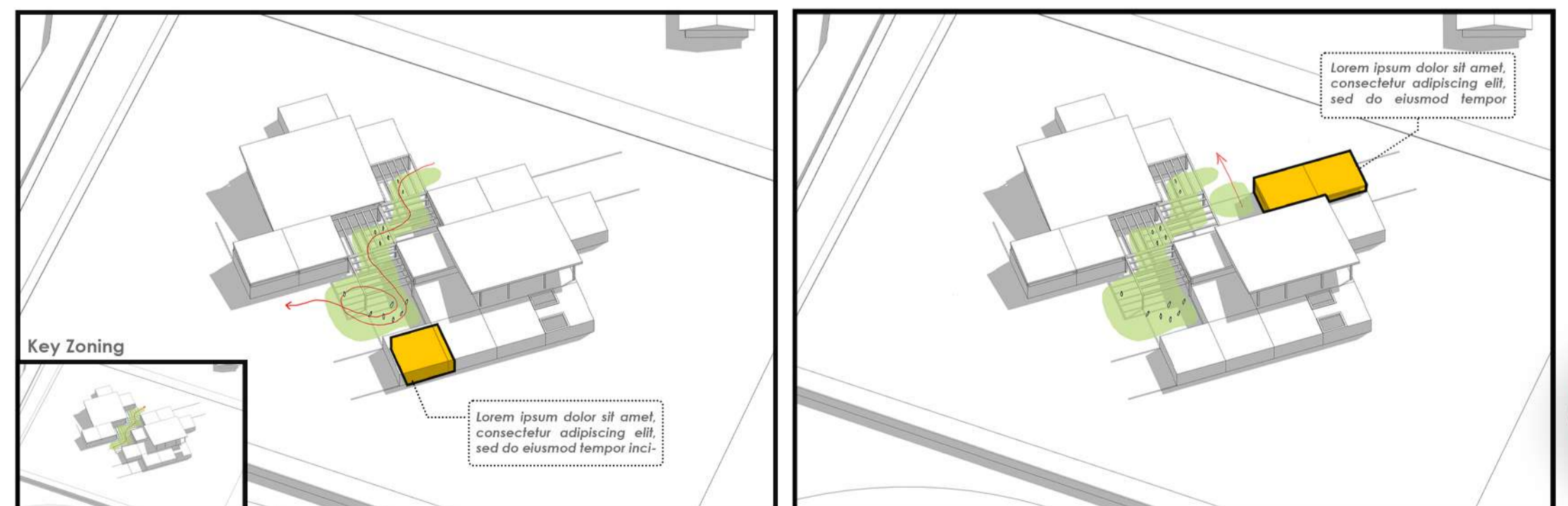
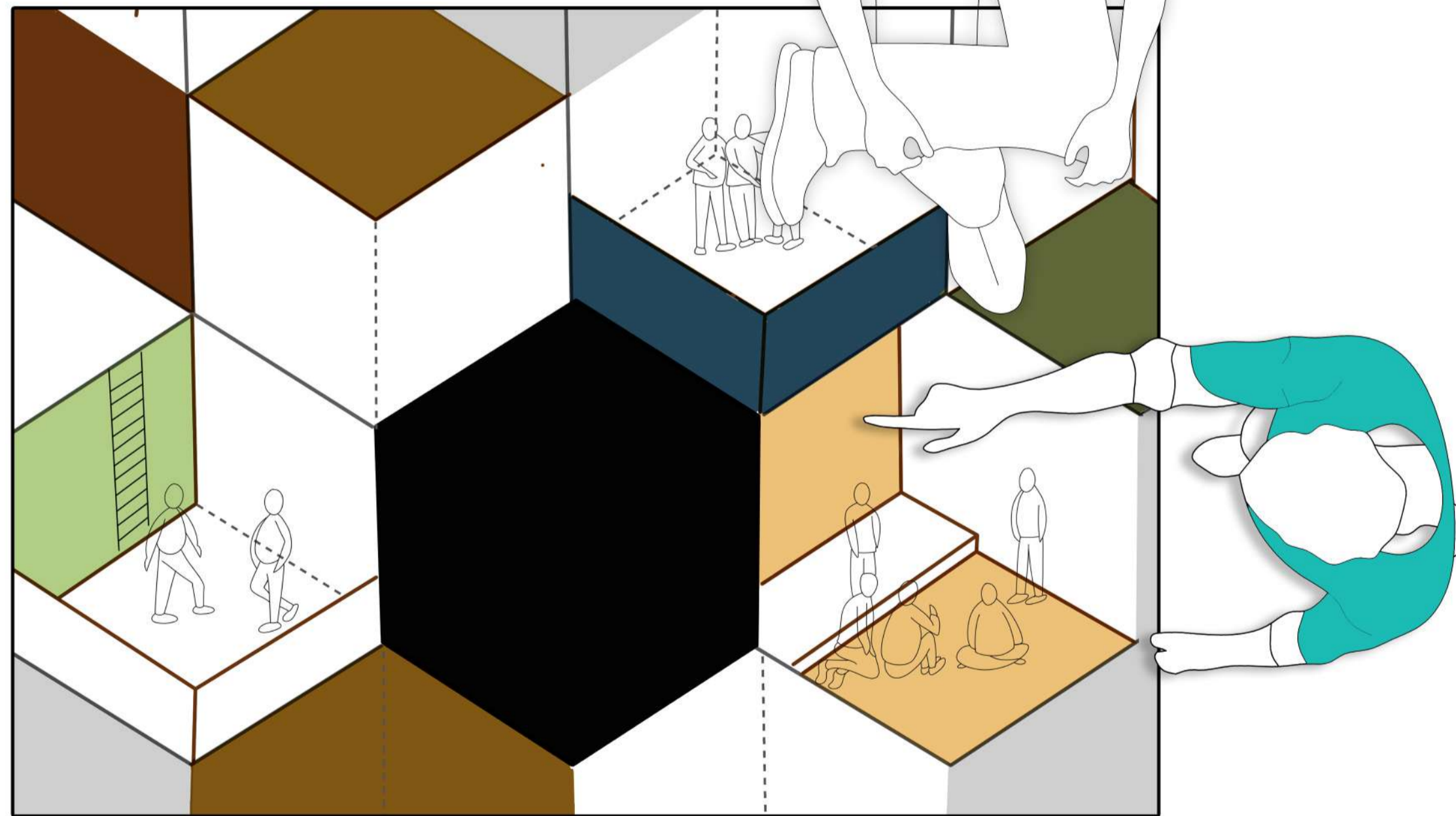
- 1 urban
- 2 functionalism
- 3 presence

Charles Correa was an urban thinker and problem solver who adapted to the power of functions to reflect upon his presence



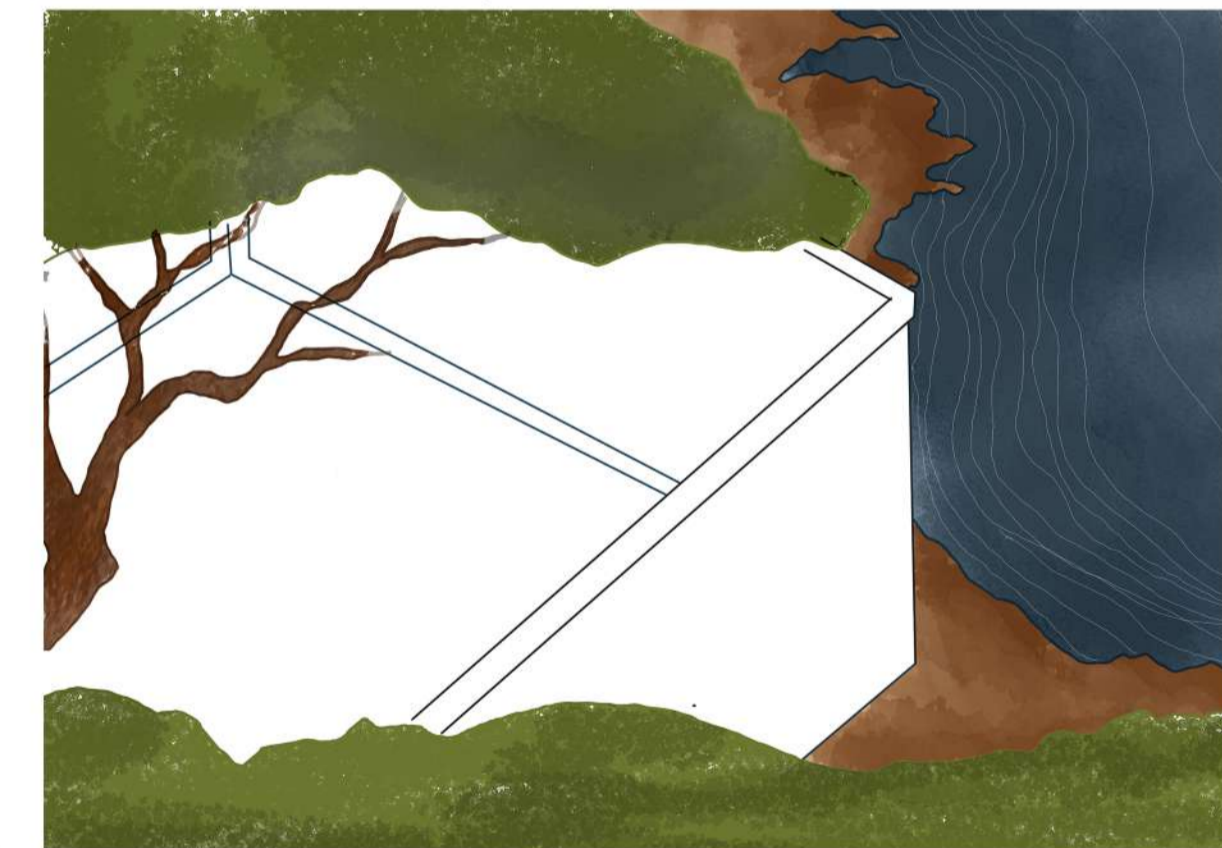
# Multiplicity

Spaces developed on site cater to multiple functions simultaneously allowing site usage to its complete potential.

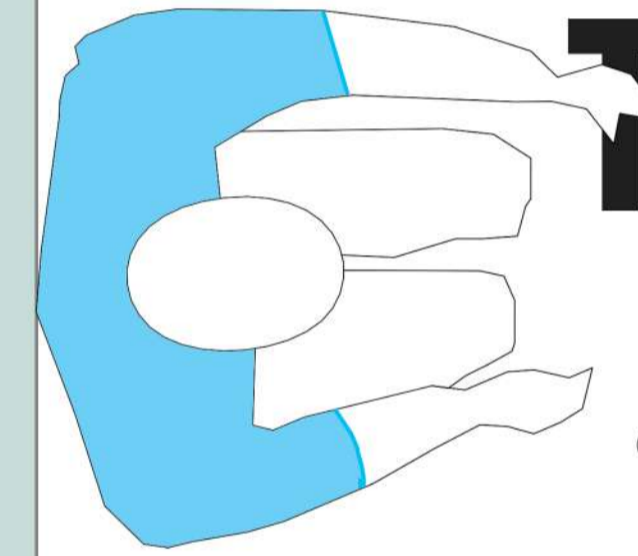
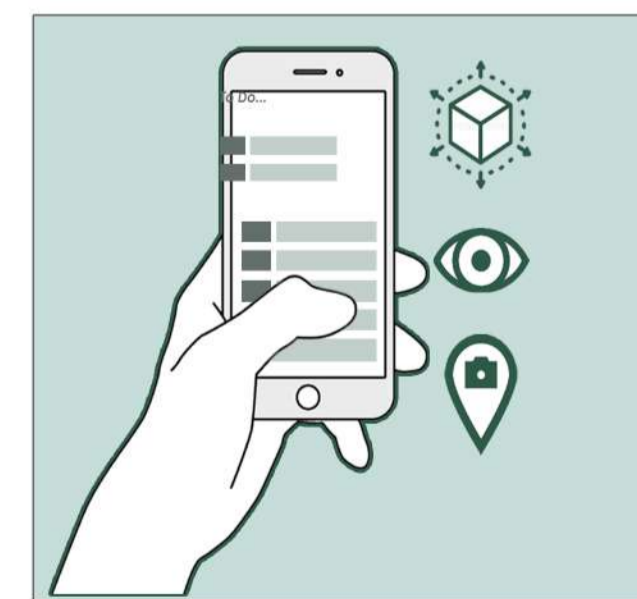
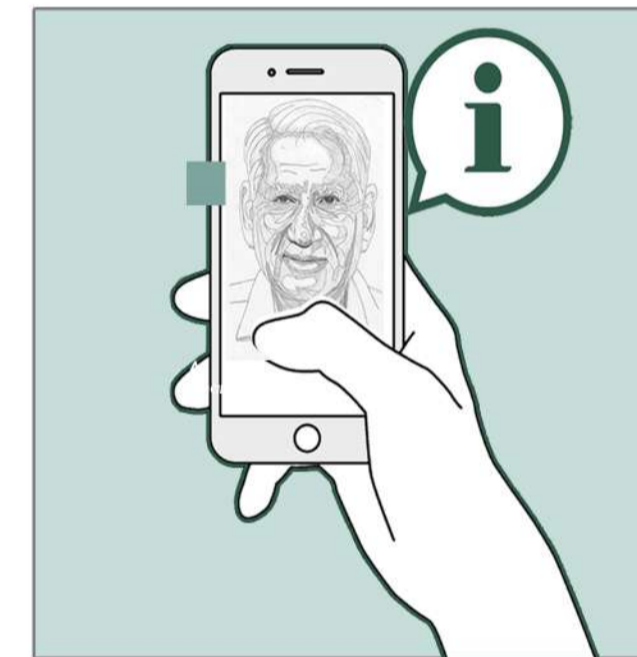


# Timelessness

Perceiving the the memorial an an essential public insert in the vicinity which add value as space, as infrastructure and as an social entity.



time & adaption



# Tracing the curve of Charles Correa

Capturing the essence by means of technology and experience



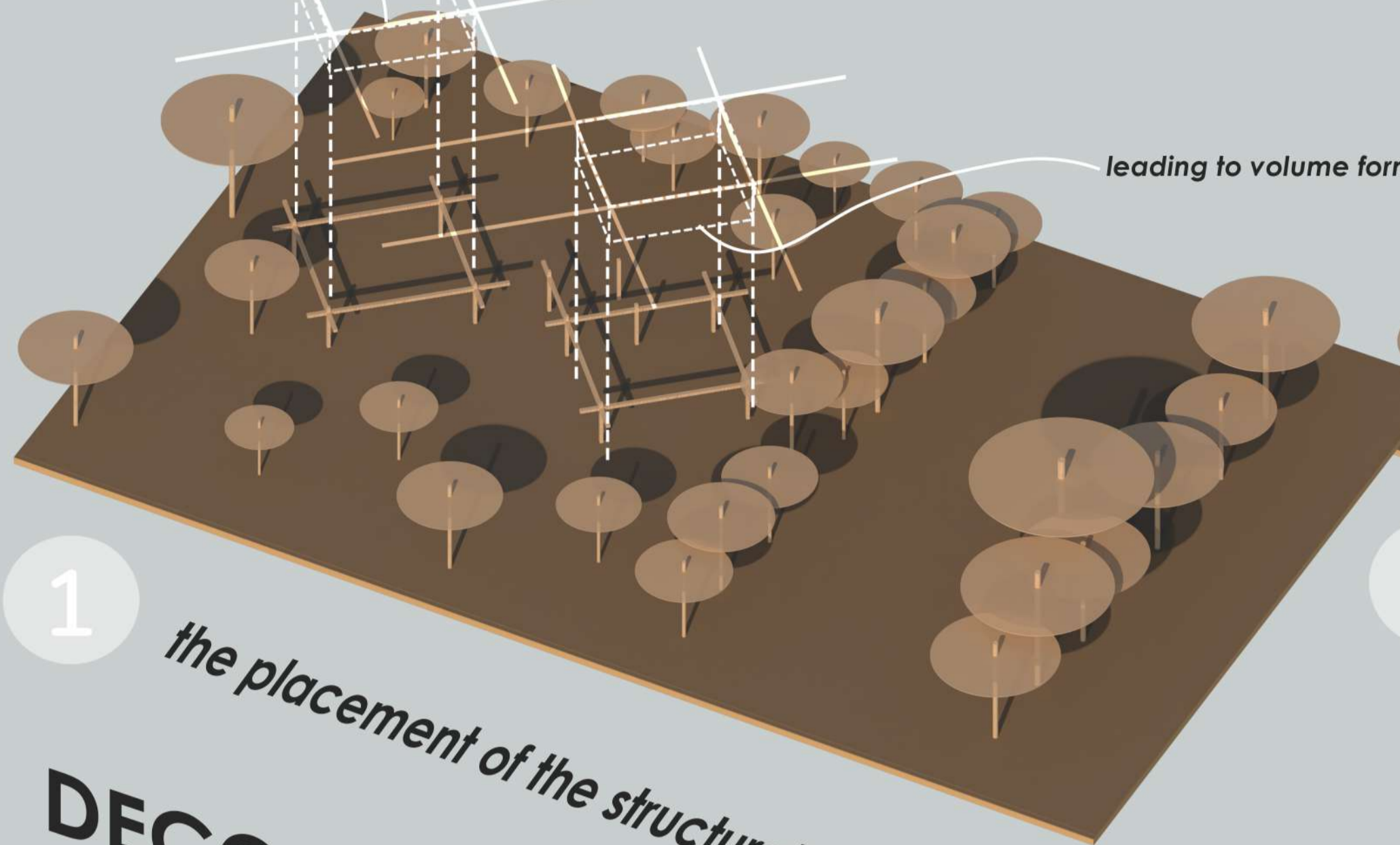
Grid formation

alignment along cardinal direction

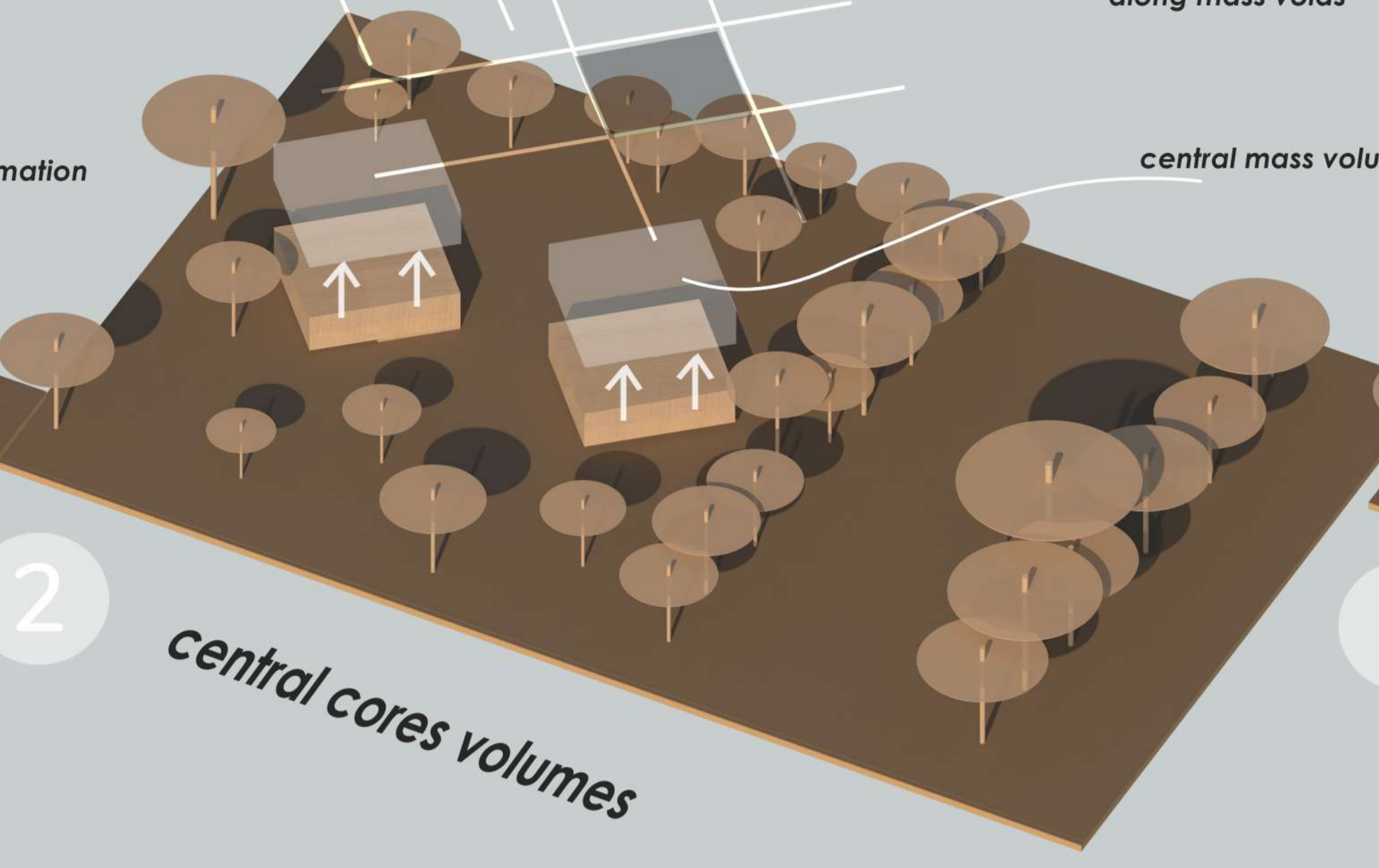
structural grid aligns itself along the cardinal direction which gives rise to the formation of volumes and masses

two double heighted volumes which act as datum bring the entire massing of the design together

volumes evolve around the cafe mass and the remaining masses evolve around the multipurpose hall

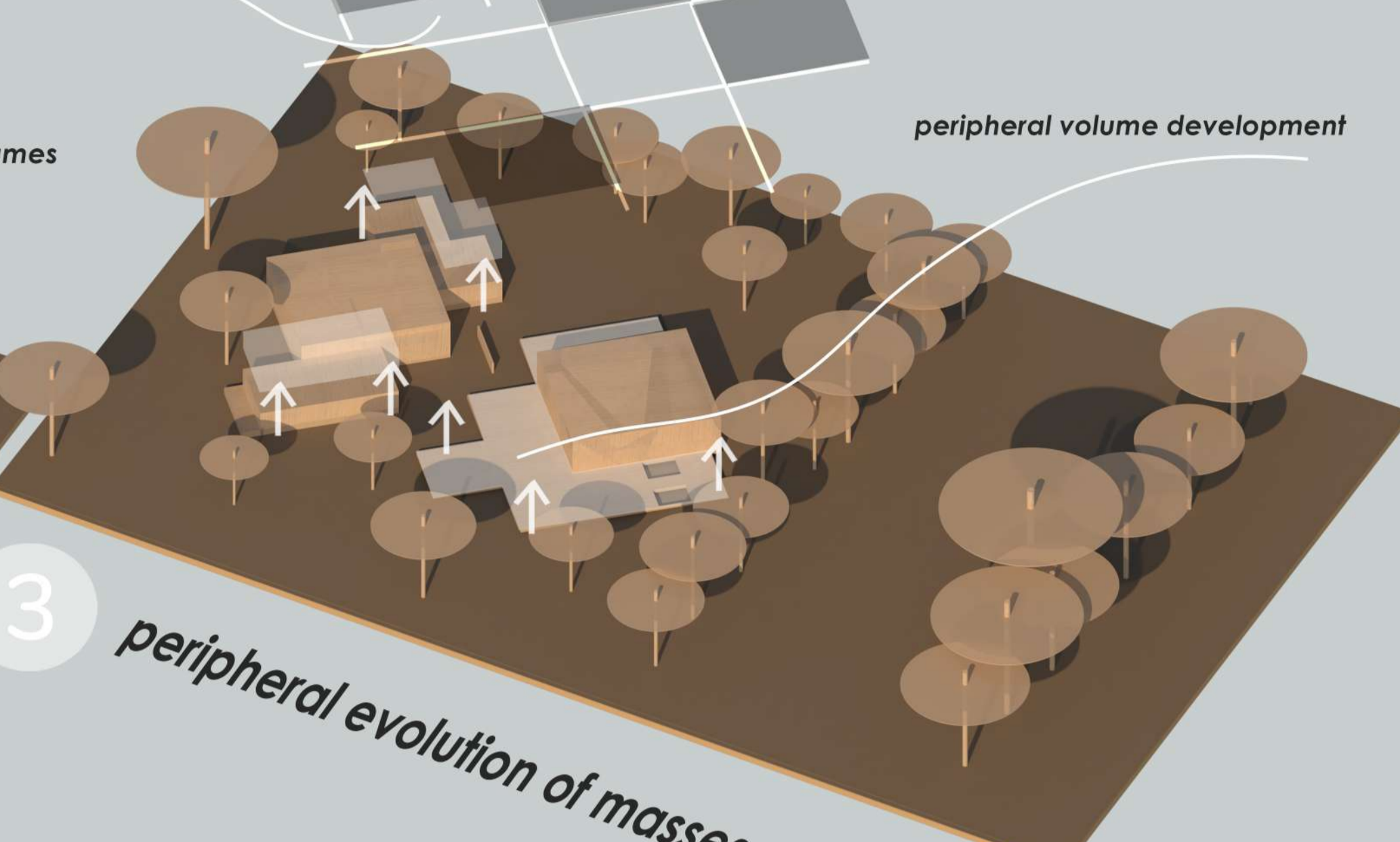


leading to volume formation



along mass voids

central mass volumes



peripheral volume development

1 the placement of the structural grid

2 central cores volumes

3 peripheral evolution of masses

# DECODING THE DEVELOPMENT PROCESS

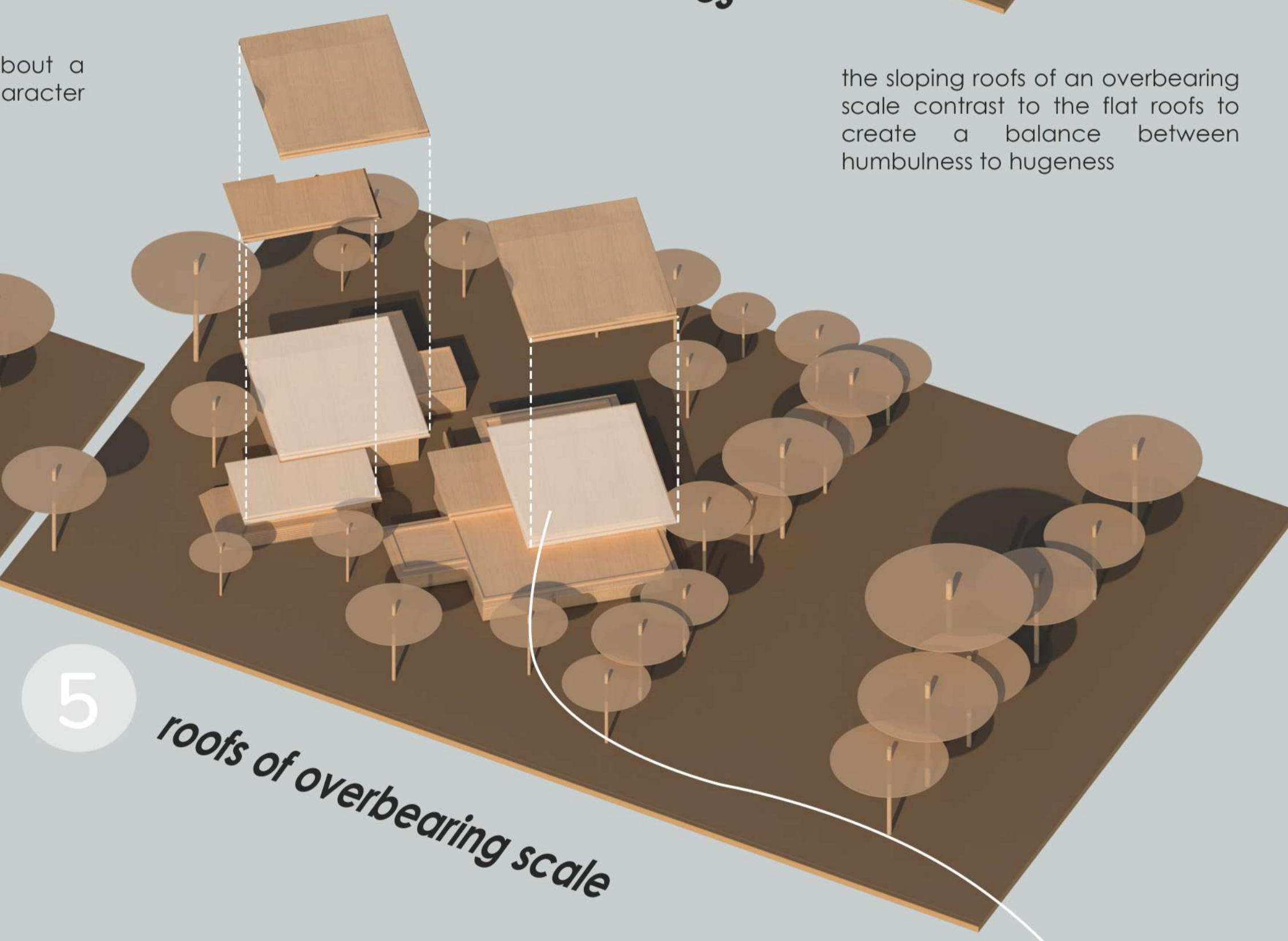
flat roofs

the flat roofs bring about a sense of humbled character to the masses

the sloping roofs of an overbearing scale contrast to the flat roofs to create a balance between humbleness to hugeness



4 roofs of humbled scale

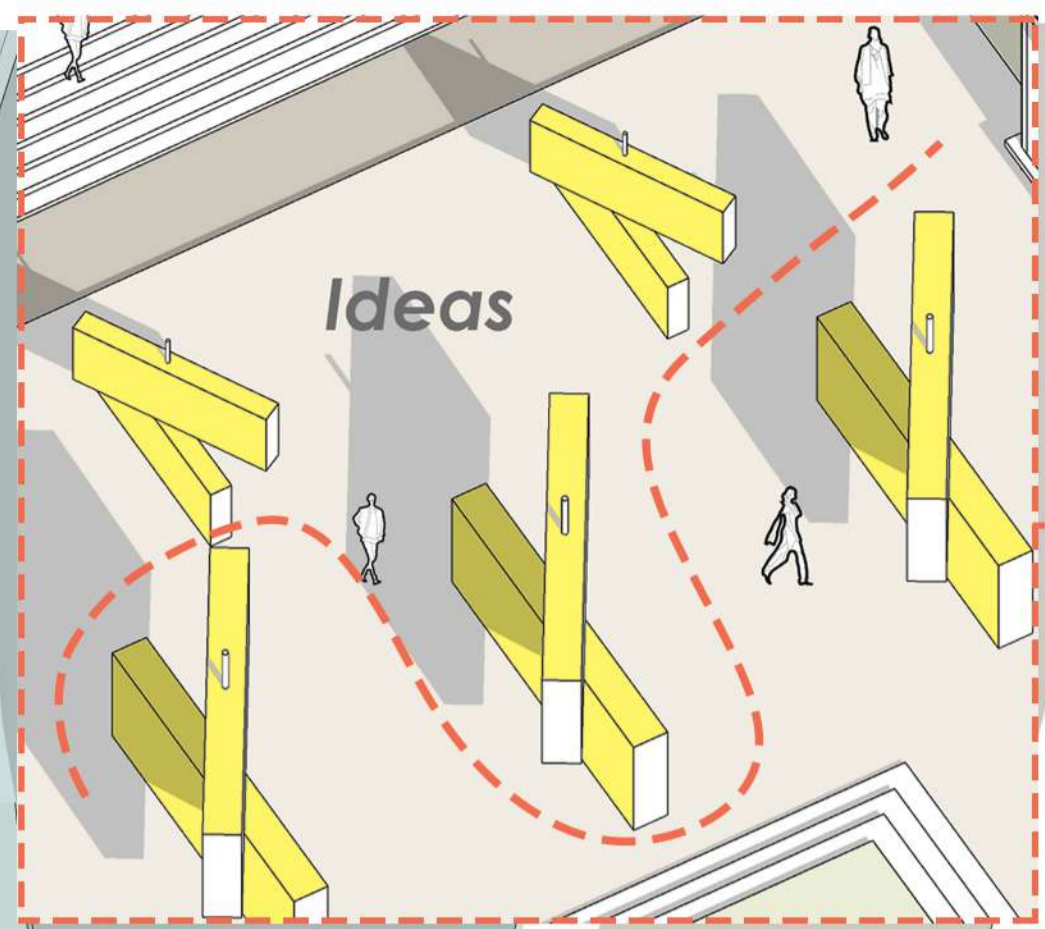


5 roofs of overbearing scale

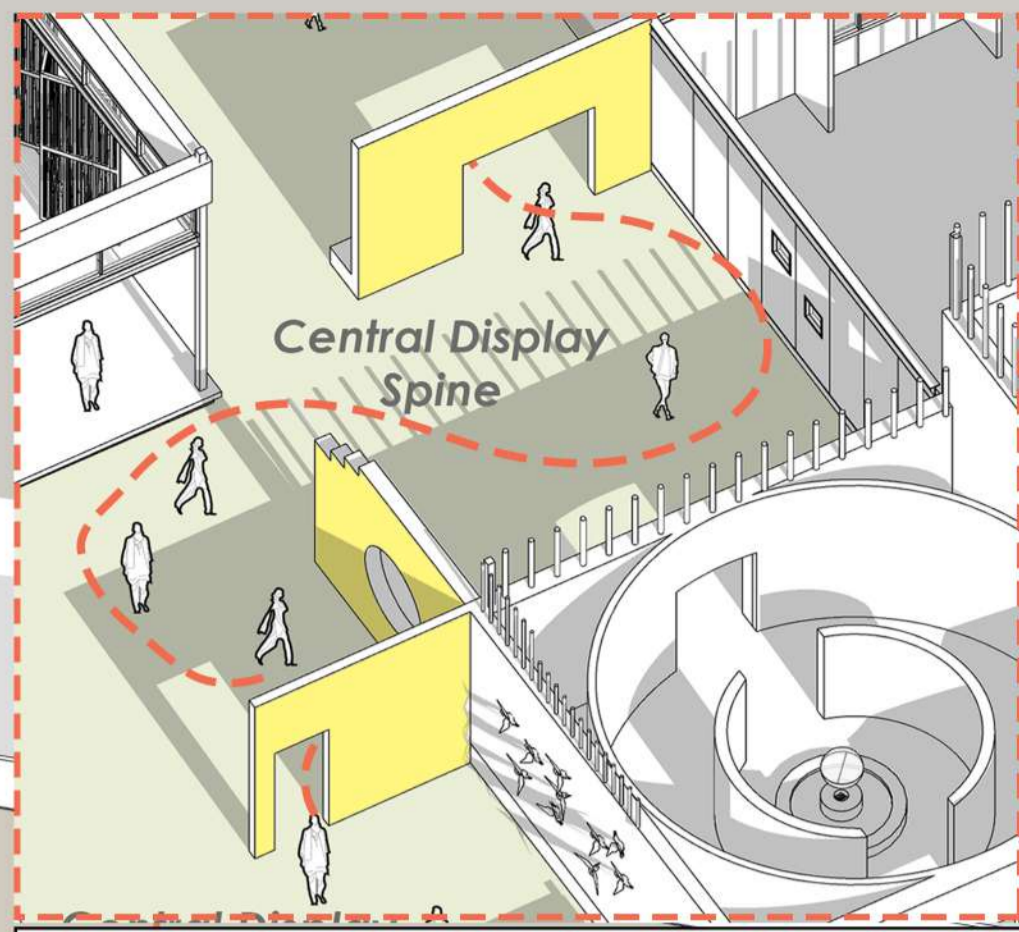
sloping roofs

natural context along with the site

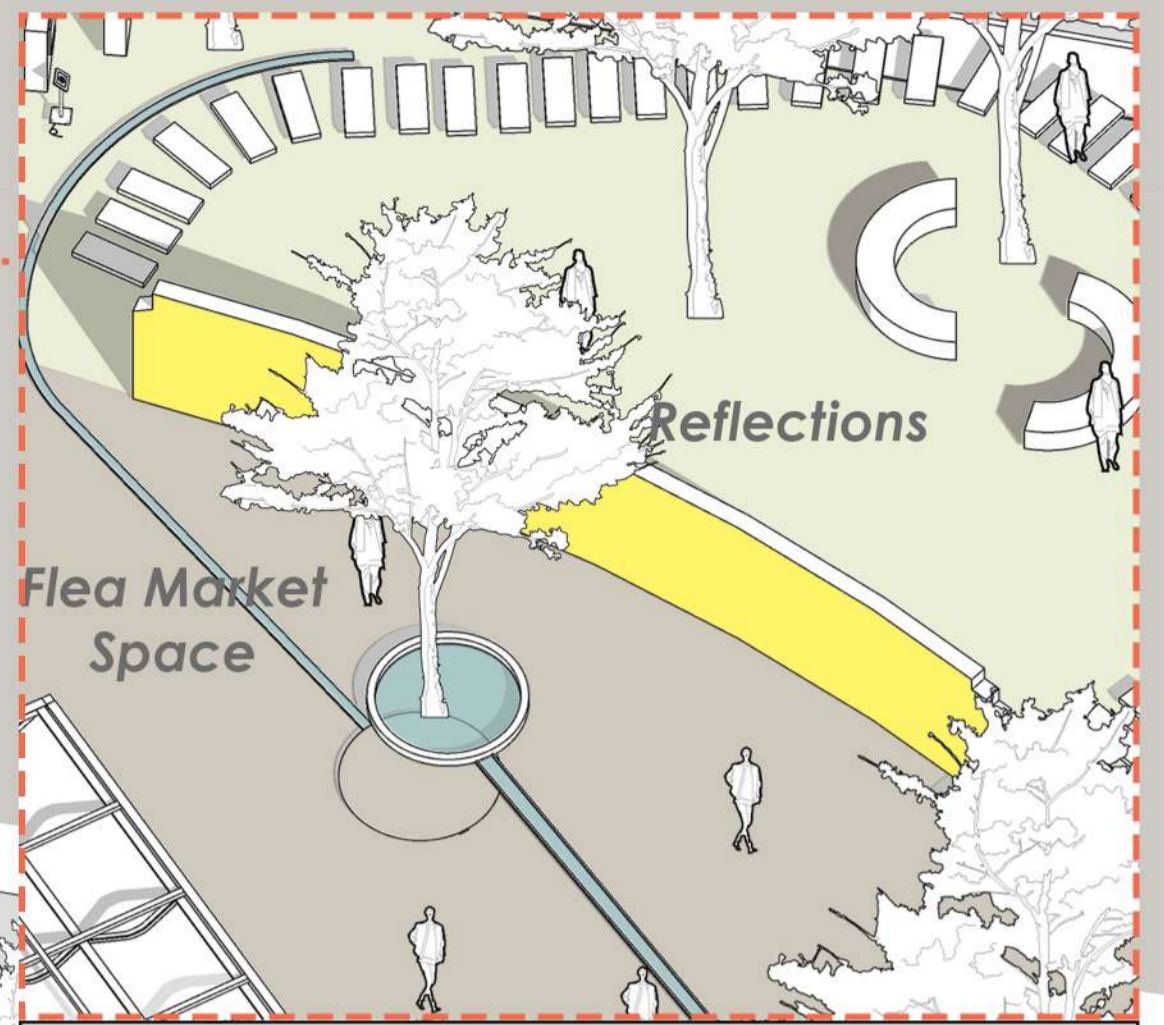
The essence of Charles Correa is tied down by the unbuilt which seamlessly opens into the built to bring about a relationship which is tangible in experience. The idea of the built form is to merge into the context of the memorial which further opens out to the natural context drawing the whole element of nature inside. The use of materials and openings break the mass and brings about the humble character to bring about the essence of Charles Correa.



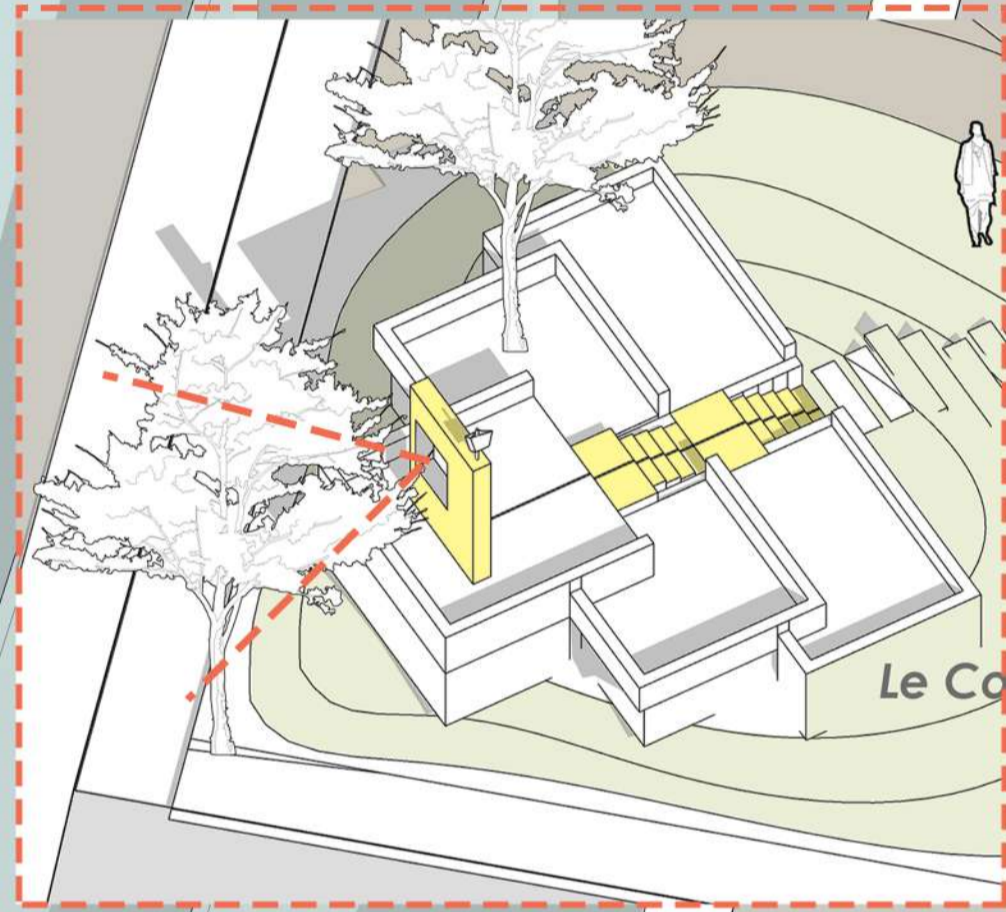
movable walls which act as a display information wall carrying the essence of correa



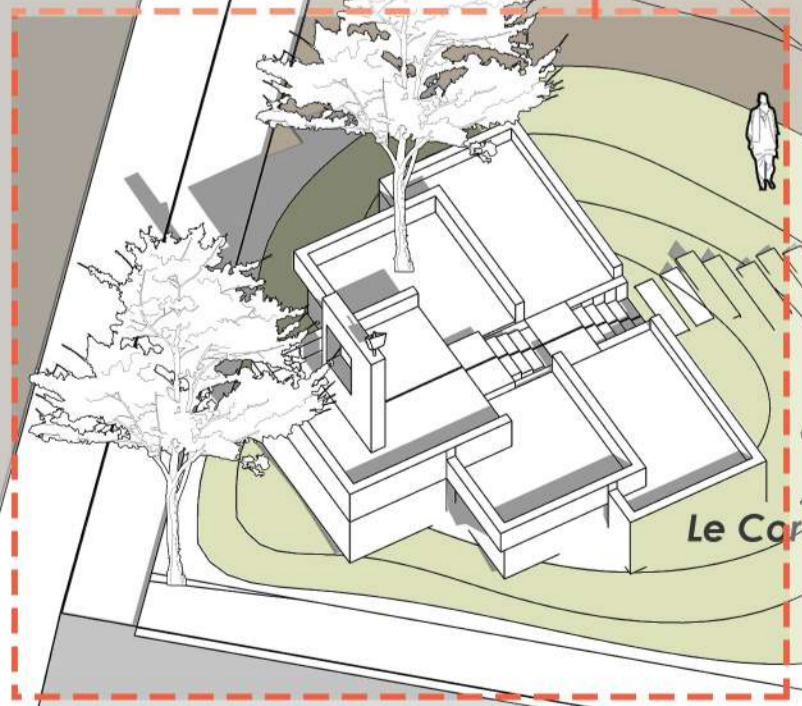
the central spine of unbuilt brings together the built form drawing the spirit of correa



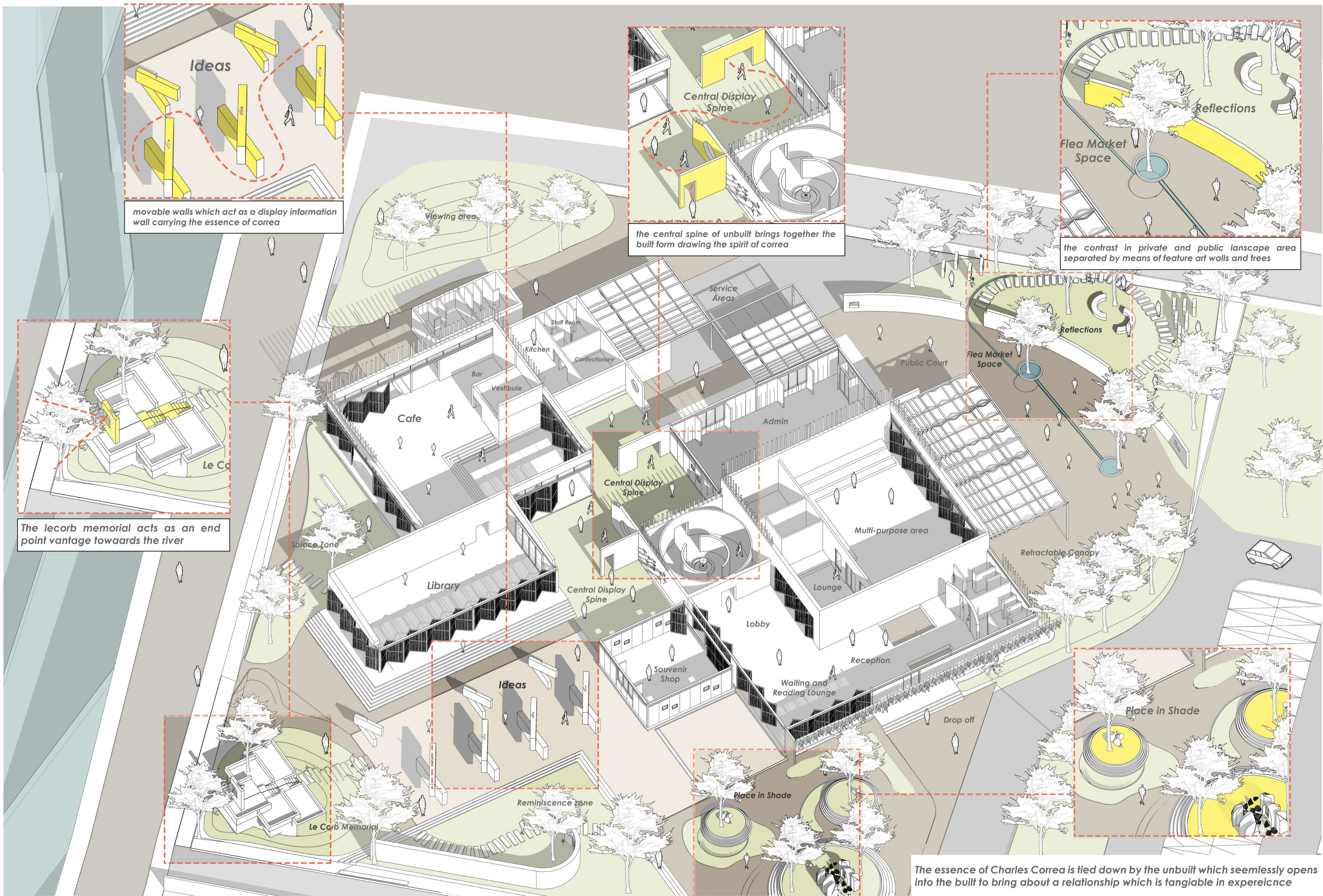
the contrast in private and public lanscape area separated by means of feature art walls and trees



The lecorb memorial acts as an end point vantage towards the river



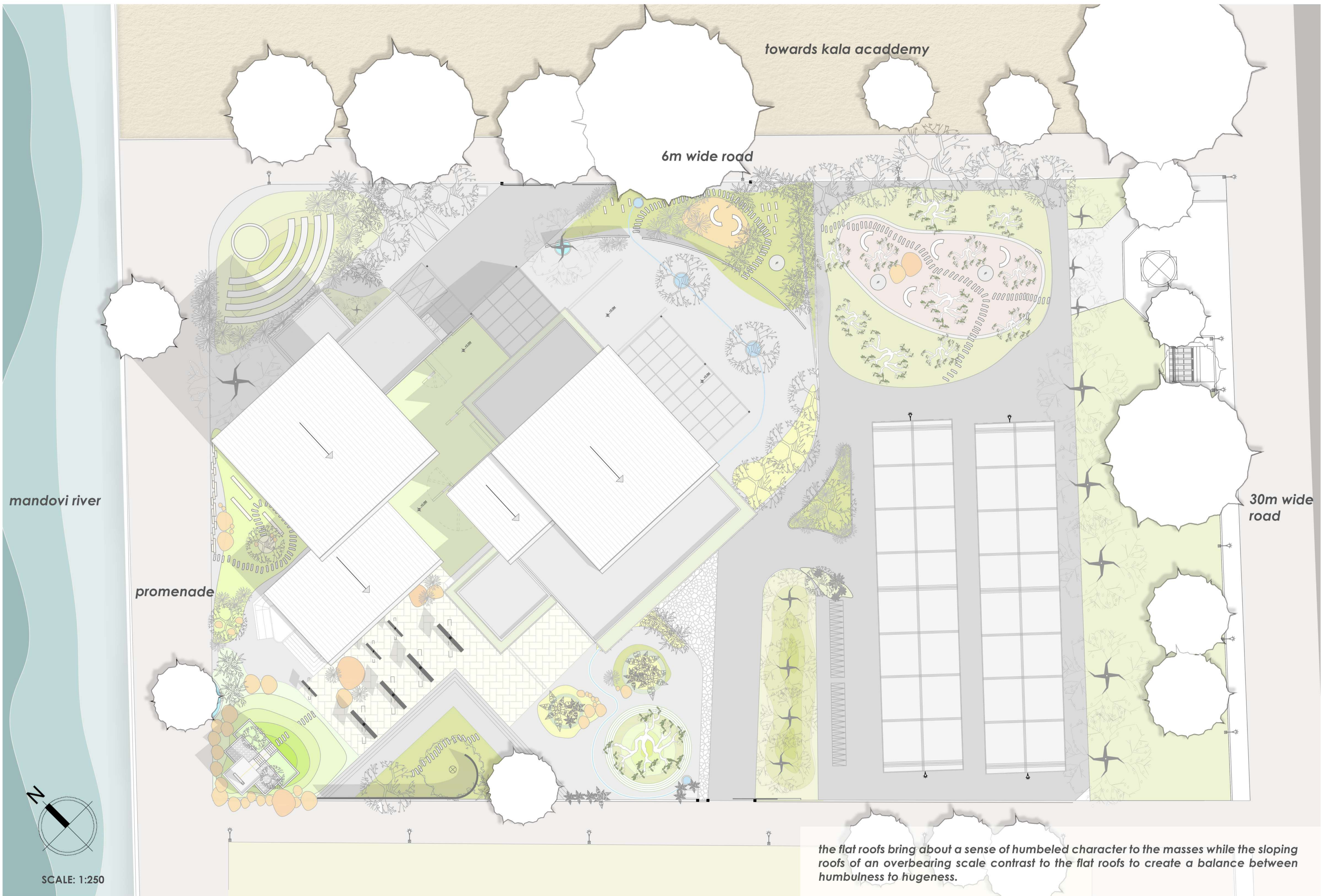
The lecorb memorial acts as an end point vantage towards the river



The essence of Charles Correa is tied down by the unbuilt which seamlessly opens into the built to bring about a relationship which is tangible in experience



# 04 THE OVERVIEW



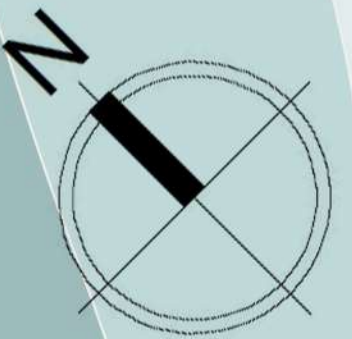
towards kala academy

6m wide road

mandovi river

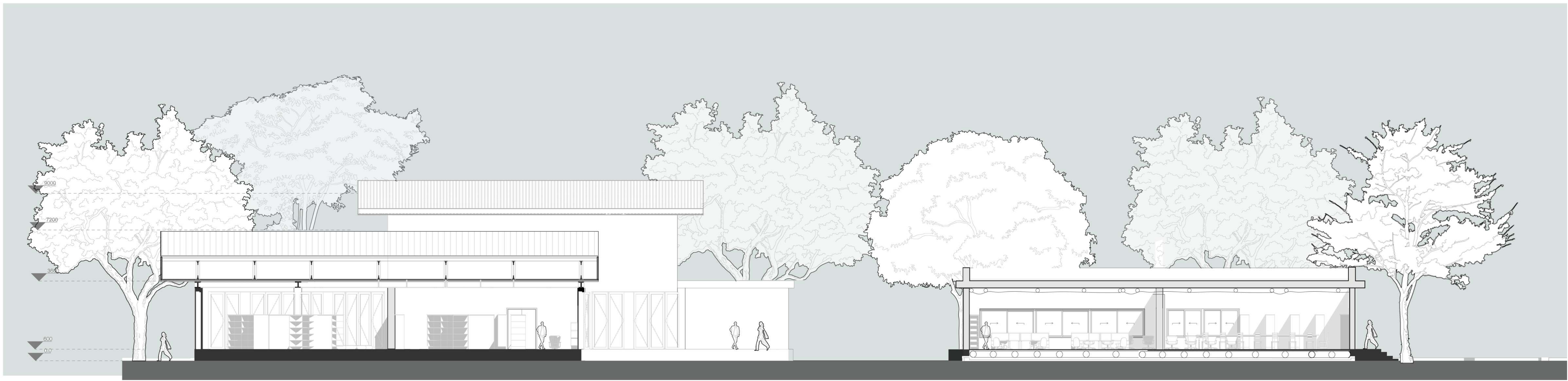
promenade

30m wide road



SCALE: 1:250

*the flat roofs bring about a sense of humbled character to the masses while the sloping roofs of an overbearing scale contrast to the flat roofs to create a balance between humbleness to hugeness.*



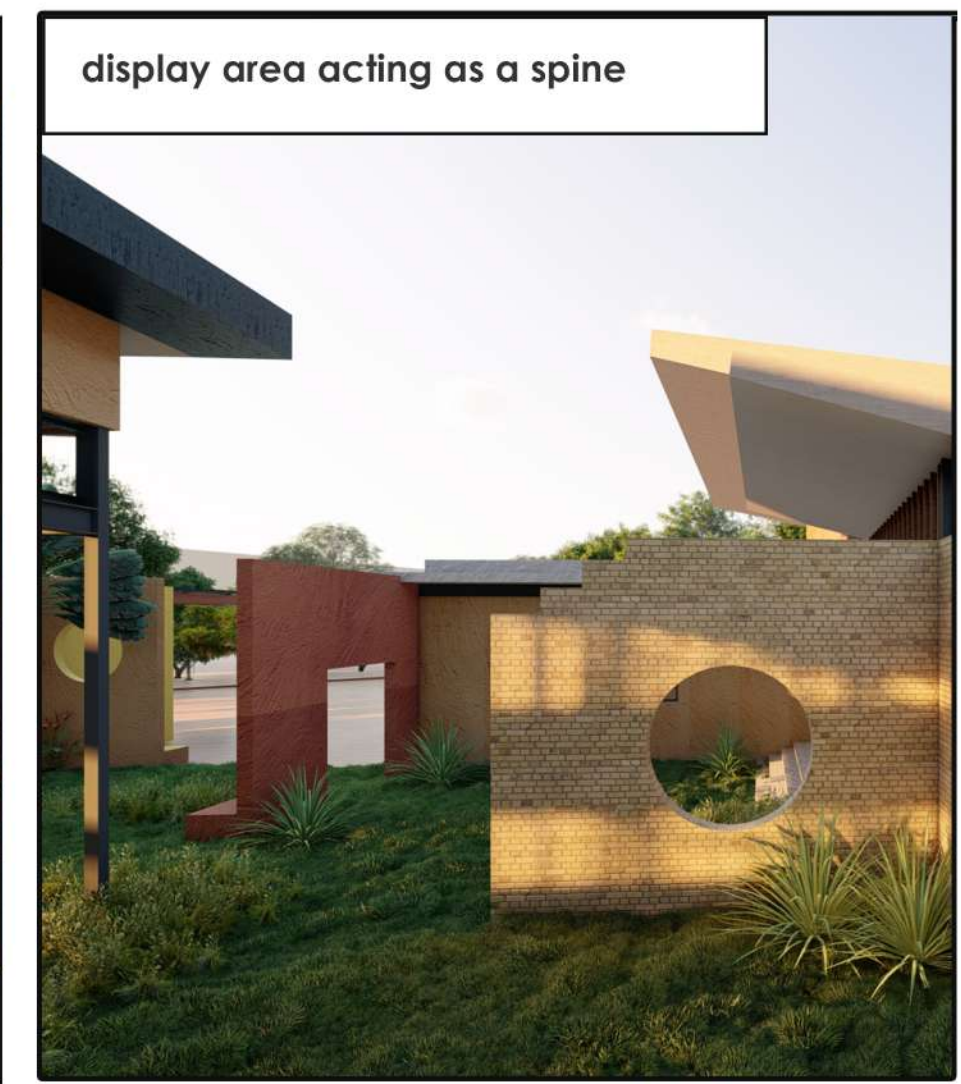
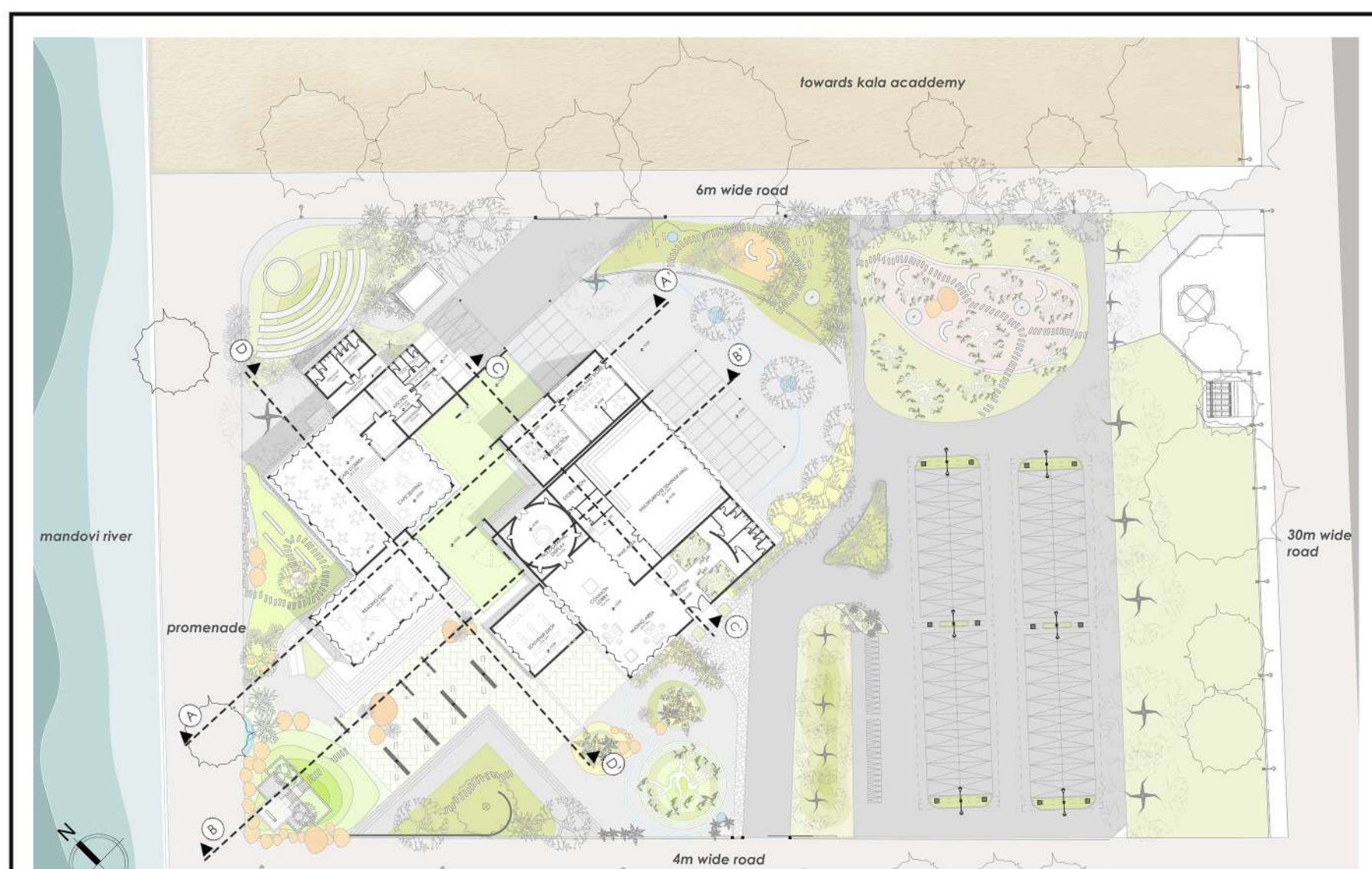
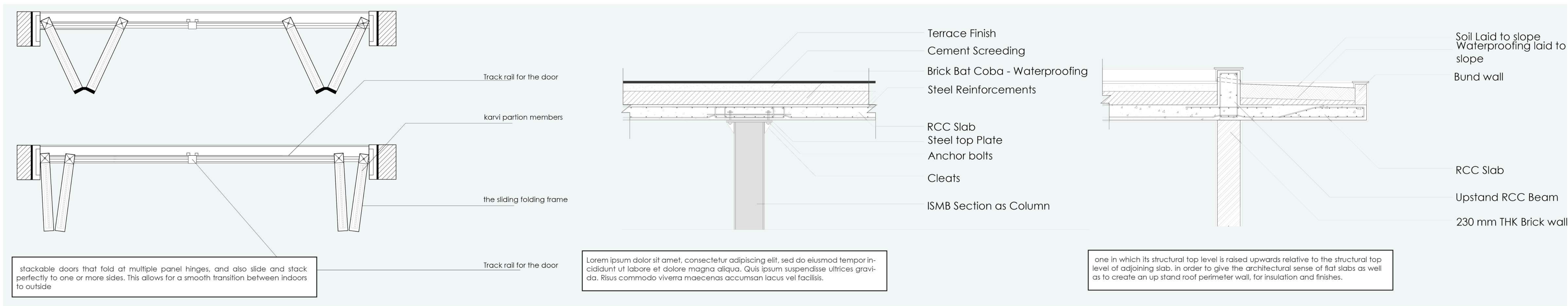
Library

Display Area

Admin Office

Archive and Store

Section AA'



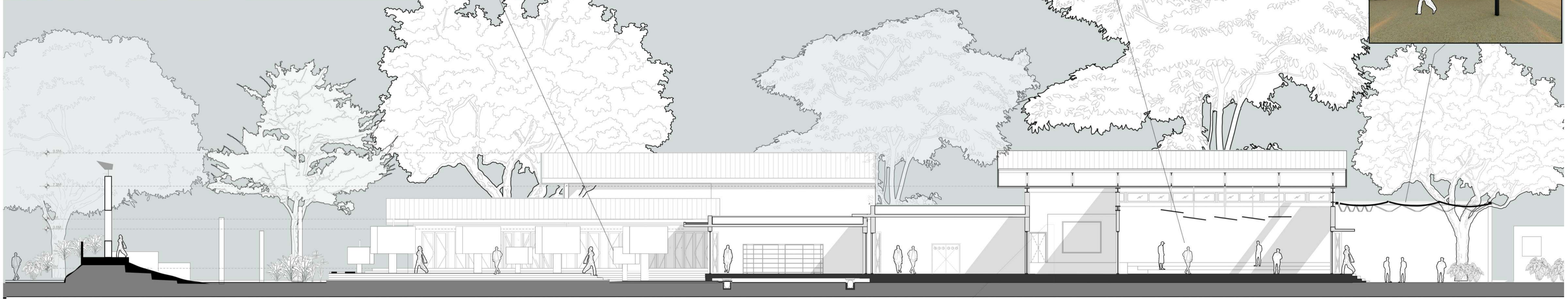


The moving walls act as displa walls which highlight symbolically the life and values of **Correa** and his **art influences**. these walls frames lead to varied memorial pockets which gives a sense of direction temporally changing with time and



The **multipurpose hall** acts as a common gathering **cultural space** which can open out to the open at the time of a performance or act as an **exhibition/ mela space** at the time of a market that needs to be set up.

The **retractable semi open pergolas** are a **kinetic element** that adapts itself during a functional need



**LE CORB TRIBUTE**

**LIBRARY**

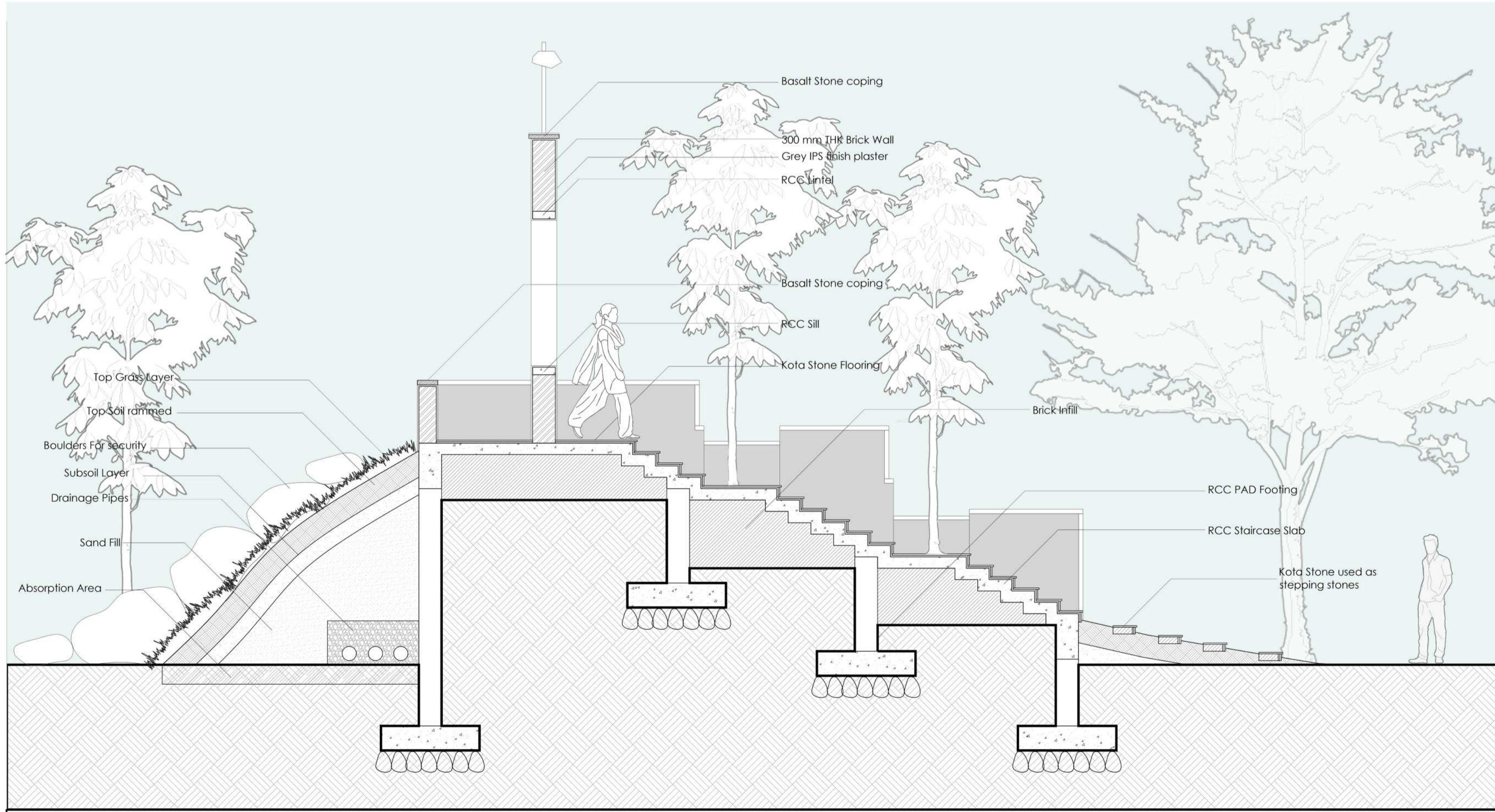
**SHOP + MOVING VOLUME**

**WAITING AREA**

**MULTIPURPOSE**

**PUBLIC PLAZA**

Section BB'



Landscaping steps are constructed from several different types of materials. However, regardless of the type of material that is used, landscaping steps all serve the same basic purpose — to provide a safe and beautiful transition between two different grade elevations. steps and stairs here are decorative without rails, lit with low-voltage outdoor lighting from top to bottom, edged with plants to add color along with landings acting as pause points.

**Layer 1 of Landscape - Trees**

**Fruit Bearing trees**

Champa trees used in important spaces for its branch character and flowering pattern, the shadows casted by the tree enhances spatial quality.

**Flowering trees**

Second later is primarily for densifying the vegetation as strategic location and for barricading. Variety of flowering and non flowering plants native to the site are used.

**Vines and Creepers**

Curtain creepers used on planter beds in roof for shading and for aesthetic purposes. flowering plants used for attraction butterflies and other birds. Thus, creating a smaller eco-system.

**Fragrant plants**

**Tropical Greens**

Terminalias, Bamboos and palm trees majorly used for barricading and for avenue purposes.

**Avenue trees**

Use of native trees species for strategic landscape design of the memorial. Avenues and barriers were created with the above mentioned types of trees.

**Foliage trees**

**Flowering shrubs**

**Layer 2 of Landscape - Plants and Shrubs**

Ground cover becomes essential for making the ground porous and not paved at the same time providing an aesthetic base for the memorial spaces.

**Layer 3 of Landscape - Groundcover**

Typologies for various spaces. taller grasses for fencing, shorter ones for green areas.

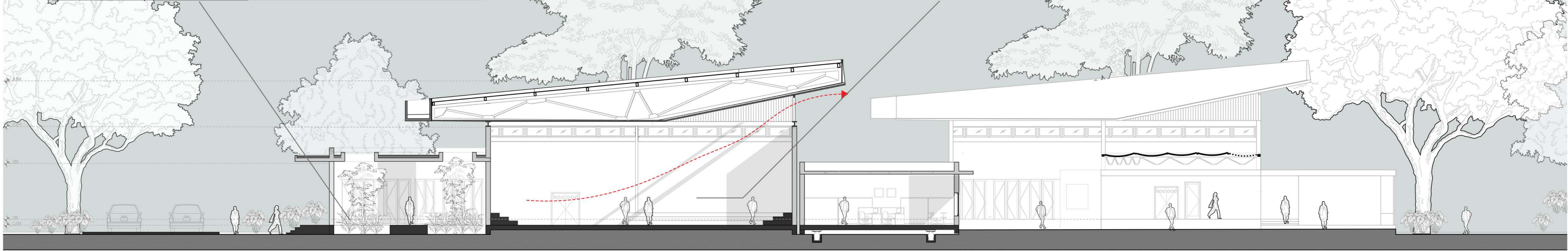
Tropical landscapes are defined by the area they are native to, which is tropical areas. They are usually recognized by the bright green of the greenery, the slight wetness in the area, and the vibrant color of the flowers. thus, using these robust plants contexulises the landscape to the place

# 06 WITHIN AND BEYOND

the courts bring in the light and softens the overall space of the waiting area. these courts can also act as rain percolation grounds as a technique to channelise the heavy rains



The multipurpose hall acts as a common gathering cultural space which can open out to the open at the time of a performance or act as an exhibition/ mela space at the time of a market that needs to be set up.



WAITING AREA

MULTIPURPOSE

ADMIN + MOVING VOLUME

GALLERY SPACE

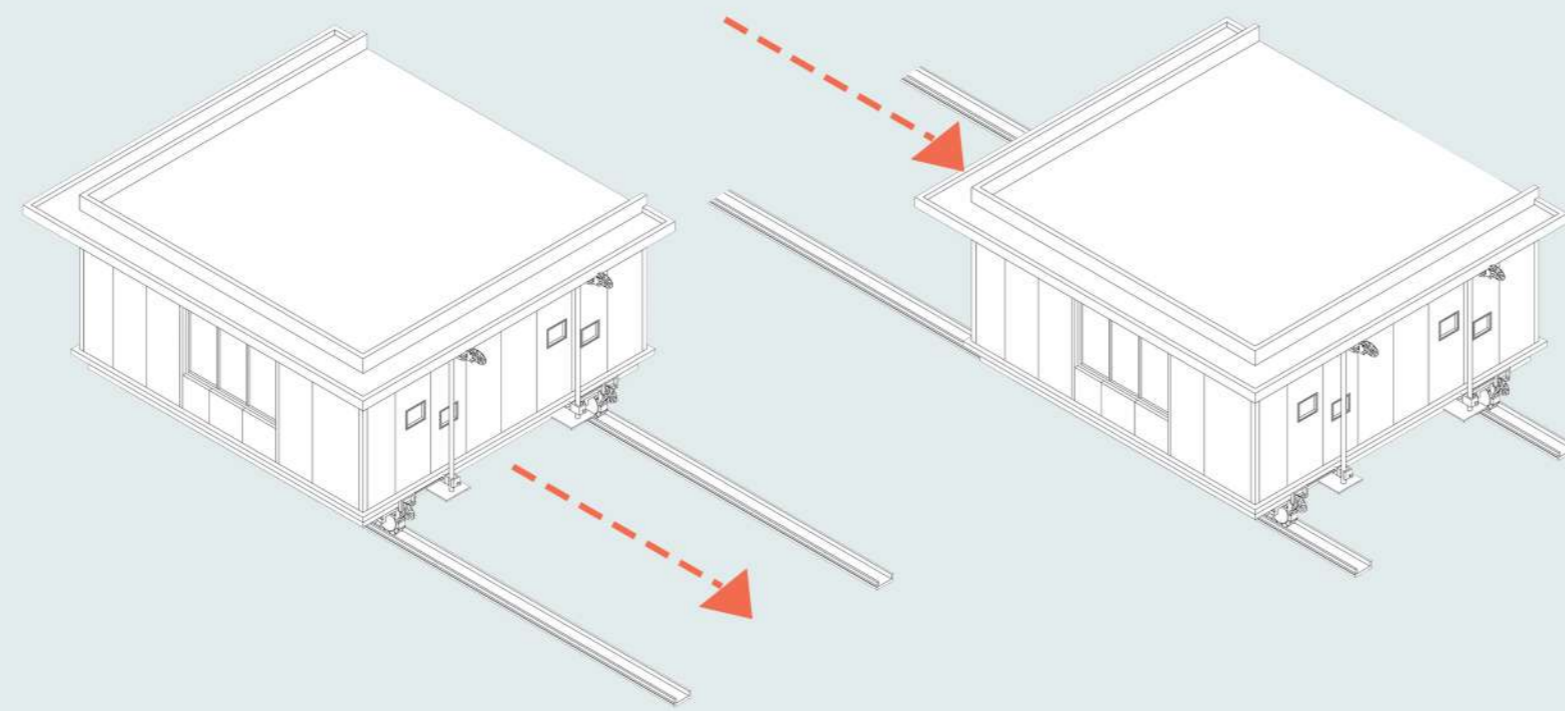
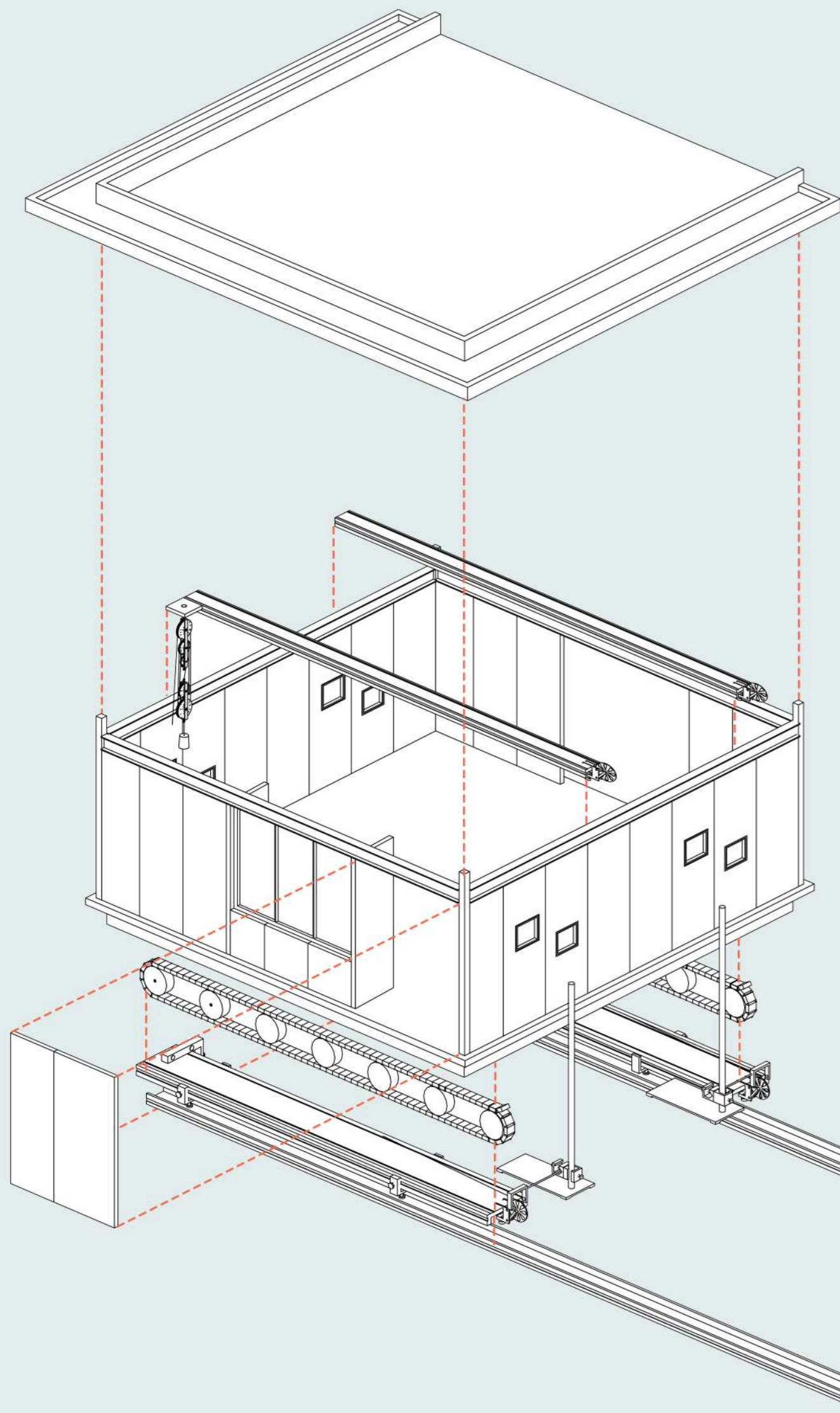
KITCHEN + STORE

TOILET

SCALE: 1:250

Section CC'

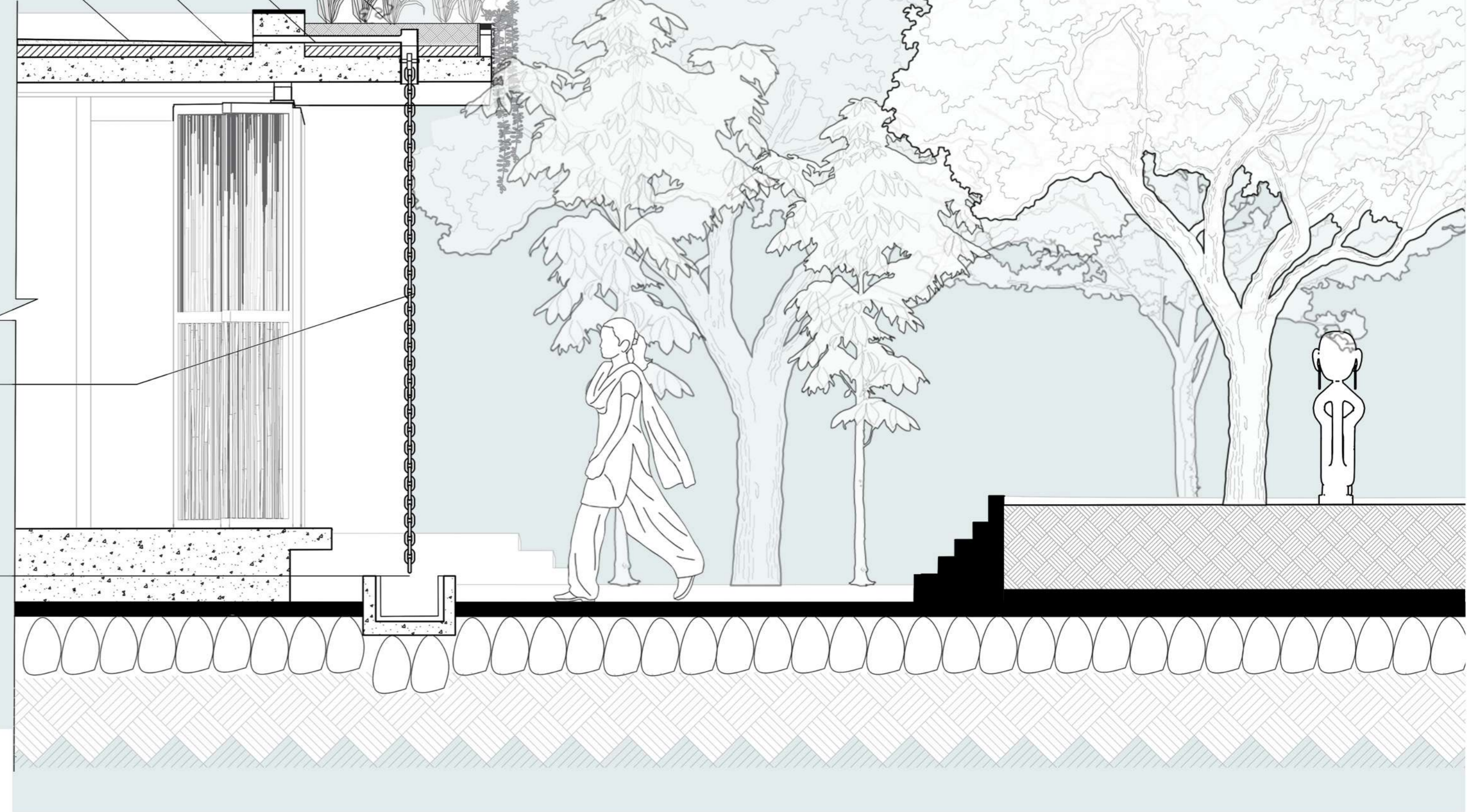
Moving plinths is a reinterpretation of a stagnant grid. Within the grid how a volume could move and adapt with time was the attempt. A system was designed based on fundamentals of a pulley and track system working entirely on mechanical energy. (Conveyer Belt Mechanism)



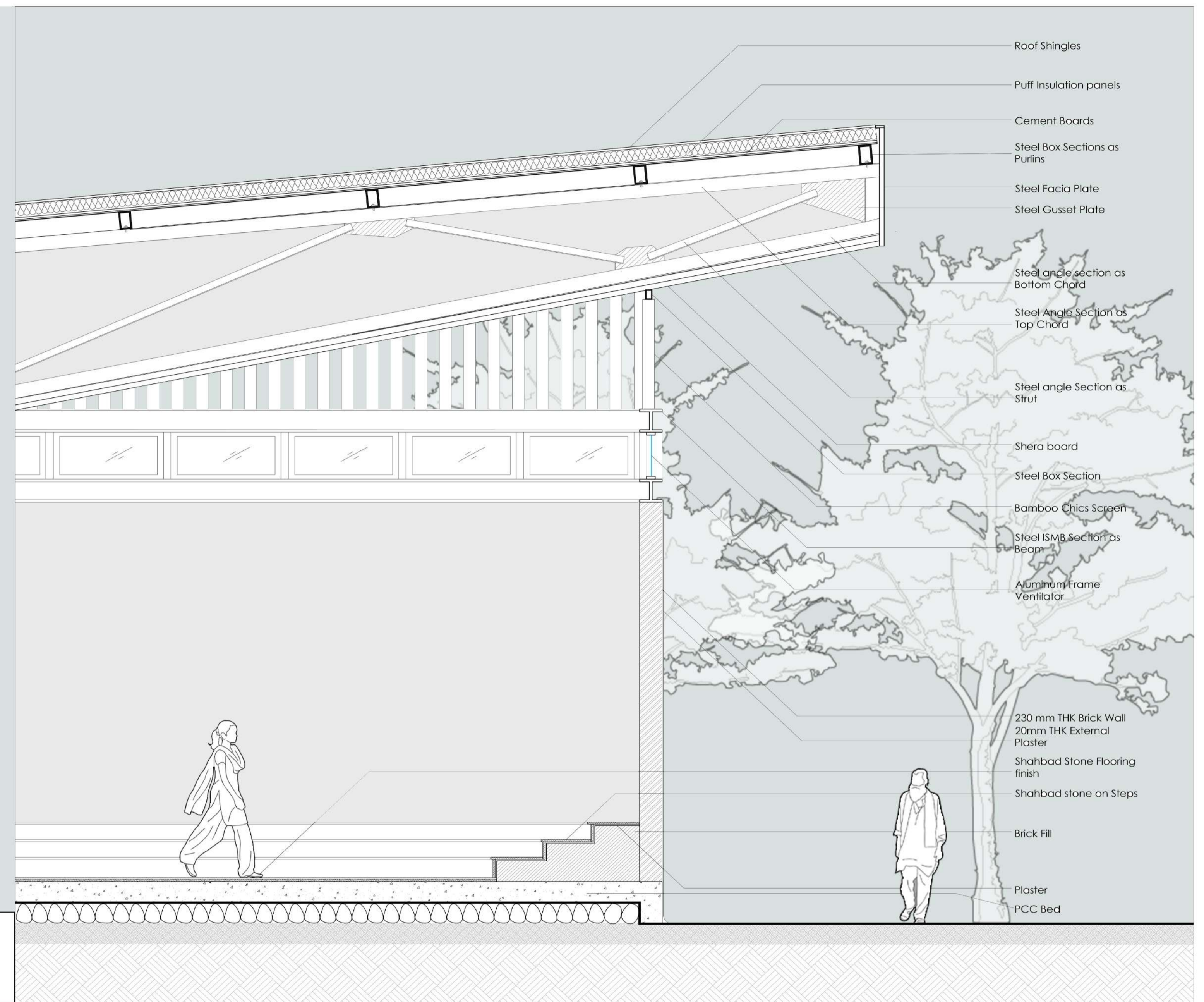
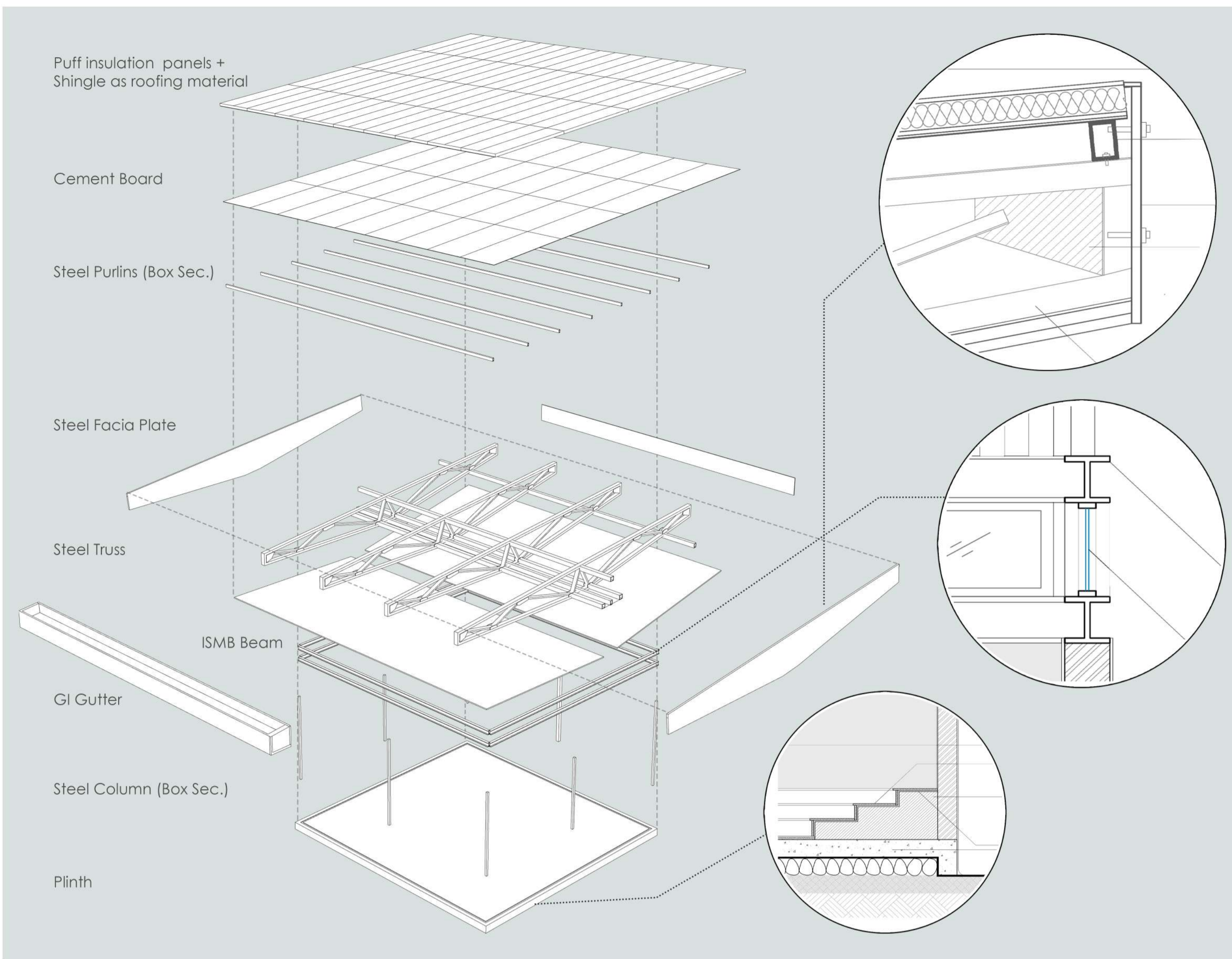
Details here are site-specific, responding to local contexts and regional conditions. Goa receives high rainfall, where rain is a defining factor of everyday life, designing for drainage is naturally essential but it also represents an opportunity to get creative. And one way to do that is with a kind of drain pipe alternative called a "rain chain." The surface runoff here is channelised through a drain and is gracefully brought down using metal chains into a plater bed.

water channel basin which becomes a landscape detail

- Planter bed soil fill
- Weep hole drain
- Terrace water proofing
- PCC laid to slope







A truss is designed to carry only loads applied at its joints and to transfer those loads to other structural elements—walls, columns, or foundations—as part of the overall structural system. The structural system ties the overall aesthetic of the built mass in order to play with the span and volume of the structure.

The **cafeteria** in the memorial is a prime public infrastructure. Cafes are a core part **Goan culture**, hence it becomes a USP for the memorial and people to visit the place. The cafe has the **best unhindered views of the Mandovi River** and the central display area.

